

Kona.





Live a vibrant life.

We have one goal – to be Australia's most loved car company. To get there, we're driven by the simple philosophy that life's most incredible moments shouldn't be reserved for a select few, and everyone should be able to experience an exciting and enjoyable drive.

So, how do we make that happen? We start by pushing our own boundaries, by making premium the new standard, and by engineering the most enjoyable ride possible.

Kona signals a generation that refuses to be bound to a singular way of thinking. Because let's face it, one size doesn't always fit all, and that's what makes the Kona so different.

It's all about freedom of choice, and the Kona gives you the freedom to choose how you present yourself (and your individuality) to the world. By putting the power in your hands, the Kona becomes an extension of you.

It's sleek, easy on the eye, well connected, and with different colour combinations¹, you'll be able to style it your way in order to live a more vibrant life.

1. Combinations vary depending on exterior colour, interior trim, variant and engine.

Actively safe.

There are two things we take very seriously – fun, and safety.

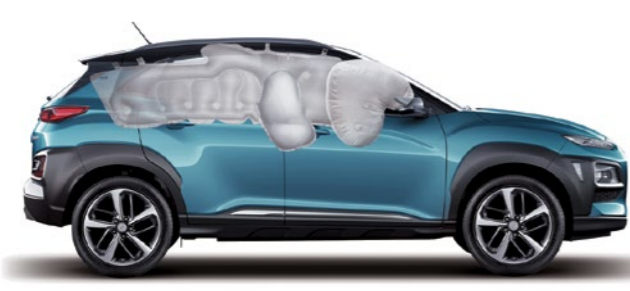
The Kona is fun to drive, but it's comforting to know that no matter where life takes you, you're protected by some of the most modern safety features. The Kona has been awarded a 5 star ANCAP safety rating, has a rigid body made of high strength steel for all round protection, 6 airbags and a rear view camera - everything we do is to help keep you out of harm's way.

Hyundai SmartSense™¹ is working to protect you too and includes a suite of safety features developed to help you be alert to (and avoid) any dangers around you.

Hyundai SmartSense™¹ includes: Blind-Spot Collision Warning (BCW), Driver Attention Warning (DAW), Forward Collision-Avoidance Assist (FCA), High Beam Assist (HBA), Lane Keeping Assist (LKA) and Rear Cross-Traffic Collision Warning (RCCW).



Rear view camera²

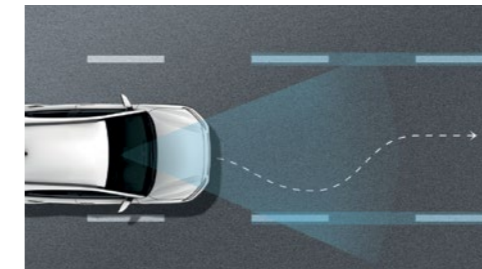


6 airbags



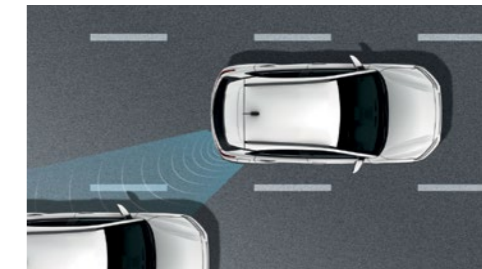
Driver Attention Warning (DAW)¹

A driver protection feature which helps monitor driving patterns in order to detect reckless or fatigued driving and prevent potential accidents. If the system detects inattentive driving patterns, an audible sound and message on the display panel will bring this to the driver's attention.



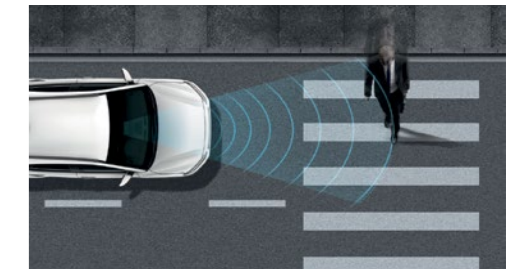
Lane Keeping Assist (LKA)¹

LKA provides steering intervention to assist the vehicle to stay in the centre of the lane. When the vehicle strays from the intended lane without indicators being activated, an audible and visual warning will be sounded.



Blind-Spot Collision Warning (BCW)¹

When driving at a speed of 30km/h or higher, the BCW function will alert the driver to vehicles that enter the blind spot, including during lane changes.



Forward Collision-Avoidance Assist (FCA)¹

Combining radar and camera data, the FCA system autonomously activates the brakes when it detects dangerous and sudden braking by the car ahead, or movement of pedestrians on the road.

¹ Hyundai SmartSense™ is a registered trademark of Hyundai Motor Company. Safety features are not a substitute for attentive driving. Available on the Go with SmartSense™ Safety Pack, Active with SmartSense™ Safety Pack, Elite and Highlander variants. High Beam Assist available on the Highlander variant.
² Highlander variant shown.

Impressive performance.

The Kona's performance is just as exciting as its personality.

Built on a high safety, lightweight body, and with three drive modes (Comfort, Eco and Sport) to choose from, the Kona is a joy to drive.

Once again, it's entirely up to you. Choose from either the 2.0L MPi 2WD with 6-speed automatic, or the 1.6L Turbo GDi AWD with 7-speed dual clutch automatic – which along with sharp throttle control and impressive torque, also allows you to get off road to explore even further.

Powerful, efficient, responsive and downright fun, the Kona really does encourage you to live a more vibrant life.



2.0 MPI petrol engine



1.6 Turbo-GDi petrol engine



2.0 MPi 2WD

110 Maximum Power
kW/6,200 rpm
180 Maximum Torque
Nm/4,500 rpm

1.6 T-GDi AWD

130 Maximum Power
kW/5,500 rpm
265 Maximum Torque
Nm/1,500 - 4,500 rpm



Designed to be different.

The Kona is designed with independence and fun in mind.

Confident, vibrant, sporty and full of personality, its cascading front grille, slim LED daytime running lights, high contrast wrap around body cladding and wide stance is designed to make a statement wherever you go.

The Kona features unique front and rear light architecture, with separated top and bottom lights stacked for extra impact.

And exclusive to the Highlander variant, you have the option to have a two-tone Phantom Black roof⁴ to give you that extra flair.

The Kona doesn't simply allow you to express your personality, it encourages it. That expression can be as unique as you are.



Top: Cascading front grille with mesh pattern³
Bottom: Top-bottom split front headlights³

Top: LED rear combination lights²
Bottom: Alloy wheels³

1. Combinations vary depending on exterior colour, interior trim, variant and engine.
2. **LED rear combination lights:** Only available on the Highlander variant.
3. Highlander variant shown.
4. Available on the Highlander variant without sunroof.



Step inside.

They say it's what's on the inside that counts, and the Kona's interior counts for a lot – especially when it comes to space. It's a compact SUV, but sit inside and the Kona soon reveals its spacious self.

The Kona has far more room than you'd expect – from the generous cargo bay, to the 60/40 folding rear seats, you'll always have space when you need it.

It's well appointed too, with a premium interior that you can style to suit. We've added a heated steering wheel¹, heated and air ventilated front seats¹, leather appointed² upholstery and a range of stylish additions.

Three accent trims³ (black leather², acid yellow leather² trim and red leather² trim) provide a vibrant edge and unique detailing to the interior styling. Put them all together and you'll create an interior that's second to none.



Top: Heated and air ventilated front seats¹
Bottom: Coloured trims and accents³

Top: Spacious cargo area⁴
Bottom: Sunroof⁵

1. Available on the Highlander variant.
 2. **Leather appointed** may contain elements of genuine leather, polyurethane leather (leather substitute) or man-made materials, or a combination thereof. Not available on the Go and Active variants.
 3. **Three accent trims:** Acid yellow leather trim and red leather trim available on the Elite and Highlander variants, depending on exterior colour chosen.
 4. Highlander variant shown.
 5. Available on the Highlander variant with body coloured roof.

Connect to the road, and your world.

With a host of advanced features, the Kona is designed for you to enjoy your love for technology whilst driving on the road.

A Head-Up Display¹ on the dashboard projects a virtual image of important data (like your speed) right in front of your eyes, so you never have to take them off the road.

We've integrated satellite navigation to guide you to your next destination and Apple CarPlay™² and Android™ Auto³ too, so you can use the touchscreen display to safely play music or make calls.

You'll also find a wireless smartphone charging pad⁴ in the centre console, so you'll always be able to easily recharge without the need for cables.



Satellite Navigation⁵



Head-Up Display¹



Wireless charging pad⁴



Apple CarPlay™² and Android™ Auto³



1. **Head-Up Display:** Only available on the Highlander variant. 2. **Apple CarPlay™** functionality requires software update. Apple CarPlay™ requires iPhone® 5 or subsequent model (lightning cable) in order to operate. Apple® and iPhone® are registered trademarks of Apple Inc. 3. **Android™ Auto:** Requires a device with Android 5.0 operating system or subsequent version, and USB cable in order to operate. Android is a trademark of Google Inc. 4. **Wireless charging pad:** Requires a Qi-enabled smartphone or adaptor to operate. Only available on the Highlander variant. 5. Available on the Active, Elite and Highlander variants.

Variants.

Life is about choice – so we've created four different Kona variants that will let you take to the road the way you want to.



Go.

Engine and transmission

2.0 MPi (Petrol) 2WD - Automatic
1.6 T-GDi (Petrol) AWD - DCT



Key specifications:

Safety

- 6 airbags
- Rear view camera
- Electronic Stability Control (ESC) including:
 - Anti-lock Braking System (ABS)
 - Brake Assist System (BAS)
 - Downhill Brake Control (DBC)
 - Electronic Brakeforce Distribution (EBD)
 - Hill-start Assist Control (HAC)
 - Traction Control System (TCS)
 - Vehicle Stability Management (VSM)
- Tyre Pressure Monitoring System (TPMS)

Interior and technology

- 7" touchscreen with Apple CarPlay™¹ and Android™ Auto² compatibility
- Bluetooth®³ connectivity
- Cruise control
- Hyundai Auto Link® Bluetooth®
- Steering wheel mounted audio & phone controls
- Centre console USB charging port

Exterior and technology

- 16" steel wheels
- LED Daytime Running Lights (DRL)
- Roof rails
- Automatic dusk sensing headlamps with escort and welcome functions

SmartSense™⁵ Safety Pack (optional)

- Blind-Spot Collision Warning (BCW)
- Driver Attention Warning (DAW)
- Forward Collision-Avoidance Assist (FCA)
- Lane Keeping Assist (LKA)
- Rear Cross-Traffic Collision Warning (RCCW)
- Heated & power folding exterior mirrors



16" steel wheels



Black cloth interior



7" touchscreen with Apple CarPlay™¹ and Android™ Auto²



Rear view camera

Active.

Engine and transmission

2.0 MPi (Petrol) 2WD - Automatic
1.6 T-GDi (Petrol) AWD - DCT



Key specifications above Go:

Safety

- Rear parking assist system

Interior and technology

- 8" satellite navigation system with DAB+ digital radio
- Krell™ 8-speaker premium audio system
- Leather appointed® steering wheel & gear knob
- 2nd row fold down arm rest with integrated cup holders

Exterior and technology

- 16" alloy wheels

SmartSense™⁵ Safety Pack (optional)

- Blind-Spot Collision Warning (BCW)
- Driver Attention Warning (DAW)
- Forward Collision-Avoidance Assist (FCA)
- Lane Keeping Assist (LKA)
- Rear Cross-Traffic Collision Warning (RCCW)
- Heated & power folding exterior mirrors



16" alloy wheels



Krell™ 8-speaker audio system



Satellite navigation



Rear Cross-Traffic Collision Warning (RCCW)

Elite.

Engine and transmission

2.0 MPi (Petrol) 2WD - Automatic
1.6 T-GDi (Petrol) AWD - DCT



Key specifications above Active:

Interior and technology

- Leather appointed® seats
- Smart Key with push button start
- Climate control – single zone with auto defog function
- Luggage net
- One touch auto up/down driver's window

Exterior and technology

- 17" alloy wheels
- Rain sensing wipers
- Carbon grey front grille
- Carbon grey exterior cladding
- Side garnish insert – silver
- Chrome front grille surround
- Front fog lights
- Solar glass with rear privacy
- Skid plate - rear



17" alloy wheels



Leather appointed® seats



Climate control with auto de-fog



Push button start

Highlander.

Engine and transmission

2.0 MPi (Petrol) 2WD - Automatic
1.6 T-GDi (Petrol) AWD - DCT



Key specifications above Elite:

Safety

- High Beam Assist (HBA)
- Front parking assist system

Interior and technology

- Glass sunroof⁹
- Head-Up Display (HUD)
- Wireless charging pad⁷
- Heated and air ventilated front seats
- Heated steering wheel
- Power driver's and front passenger seats
- 4.2" TFT colour supervision cluster
- Electro-chromatic Mirror (ECM) - auto dimming
- Hyundai Auto Link Premium

Exterior and technology

- 18" alloy wheels
- LED front headlights
- LED rear combination lights



18" alloy wheels



Head-Up Display (HUD)



Wireless charging pad⁷



Glass sunroof⁹

1. **Apple CarPlay™** functionality requires software update. Apple CarPlay™ requires iPhone® 5 or subsequent model (lightning cable) in order to operate. Apple® and iPhone® are registered trademarks of Apple Inc. 2. **Android™ Auto:** Requires a device with Android 5.0 operating system or subsequent version, and USB cable in order to operate. Android is a trademark of Google Inc. 3. **Bluetooth®** is a registered trademark of Bluetooth SIG, Inc. Please check your Bluetooth® device's capabilities to ensure compatibility. 4. **iPod®** is a registered trademark of Apple computer Inc., registered in the U.S. and other countries. 5. **Hyundai SmartSense™** is a registered trademark of Hyundai Motor Company. Safety features are not a substitute for attentive driving. High Beam Assist is only available on the Highlander variant. 6. **Leather appointed** may contain elements of genuine leather, polyurethane leather (leather substitute) or man-made materials, or a combination thereof. 7. **Wireless charging pad:** Requires a Qi-enabled smartphone or adaptor to operate. 8. 1. Not all Hyundai Auto Link services are available everywhere, particularly in remote or enclosed areas, or on all vehicles, at all times. The operation of the location services may be affected by your location, activation or deactivation of location services on your mobile device, and the services provided by your telecommunications service provider. Some Hyundai Auto Link services may not be fully available if the GPS system or other mobile device features are not working. 9. **Sunroof:** Available on the Highlander variant with body coloured roof.

A colourful choice.

Style your Kona with three stylish trims¹, two-tone roof², and a vibrant range of colours – including Tangerine Comet, Blue Lagoon, Phantom Black and Ceramic Blue.

With Kona, you'll find a colour combination to suit your personality and complement your lifestyle.

Kona interiors



Go & Active
Black cloth

Elite & Highlander
Black leather

Elite & Highlander
Acid Yellow leather

Elite & Highlander
Red leather

Kona exterior colours



Chalk White – P6W



Acid Yellow – W9Y



Dark Knight – YG7



Phantom Black – MZH



Lake Silver – SS7



Ceramic Blue – SU8



Blue Lagoon – Z3U



Tangerine Comet – TA9



Pulse Red – Y2R

¹ Three stylish trims: Acid yellow leather trim and red leather trim not available on the Go and Active variants.

² Two-tone roof: Available on the Highlander variant without sunroof.

Kona colour availability by trim*

Trim	Exterior / Interior		Go/Active	Elite			Highlander		
			Black cloth (TRY)	Black leather (TRY)	Red leather (TRY)	Acid Yellow leather (TRY)	Black leather (TRY)	Red leather (TRY)	Acid Yellow leather (TRY)
Chalk White (Metallic) Standard Paint	P6W	Body coloured roof	•	•	-	-	•	-	-
	P61	Phantom Black roof	-	-	-	-	•	-	-
Lake Silver (Mica/Metallic) Premium Paint	SS7	Body coloured roof	•	-	-	-	-	-	-
Dark Knight (Mica) Premium Paint	YG7	Body coloured roof	-	•	-	-	•	-	-
Phantom Black (Mica) Premium Paint	MZH	Body coloured roof	•	•	-	-	•	-	-
	TA9	Body coloured roof	•	•	-	-	•	-	-
Tangerine Comet (Mica) Premium Paint	TT1	Phantom Black roof	-	-	-	-	•	-	-
	Y2R	Body coloured roof	-	-	•	-	-	•	-
Pulse Red (Mica/Metallic) Premium Paint	Y21	Phantom Black roof	-	-	-	-	-	•	-
	W9Y	Body coloured roof	-	-	-	•	-	-	•
Acid Yellow (Mica/Metallic) Premium Paint	W91	Phantom Black roof	-	-	-	-	-	-	•
	Z3U	Body coloured roof	•	•	-	-	•	-	-
Blue Lagoon (Mica/Metallic) Premium Paint	Z31	Phantom Black roof	-	-	-	-	•	-	-
	SU8	Body coloured roof	•	•	-	-	•	-	-
Ceramic Blue (Mica) Premium Paint	SU1	Phantom Black roof	-	-	-	-	•	-	-

*Colours shown are indicative only and may vary due to the printing process. Premium paints are an additional cost.

Hyundai Genuine Accessories.

The Kona is an extension of your personality, and Hyundai Genuine Accessories¹ can help make it even more unique.

From roof racks to cargo liners, there's a suite of practical, and stylish Hyundai Genuine Accessories¹ to match.



Top: Tinted stylevisors (set of 4)
Bottom: Cargo organiser⁵

Top: Carpet cargo liner
Bottom: Tailored carpet floor mats (set of 4) – yellow stitching

Top: Laser shades (rear, set of 2)
Bottom: Dash mat

1. All Hyundai Genuine Accessories are subject to warranty conditions. See your nearest Hyundai Dealer or visit www.hyundai.com.au for full warranty terms and usage recommendations.
2. Auxiliary cable not suitable for Apple® devices. 3. iPad® is a registered trademark of Apple Inc. The iPad® holder has been designed to hold iPad® models 1, 2, 3, 4 or Air securely. To ensure occupants are protected in the event of a collision, the screen protector must be fitted to the iPad® when in use. iPad® not included. 4. Only suitable for use with a retractable seatbelt.
5. Items shown in cargo organiser not included. 6. Maximum ball download 130kg. 2WD Towing capacity 1,300kg braked & 600kg unbraked. AWD Towing capacity 1,250kg braked & 600kg unbraked. Towbar capacity subject to regulatory requirements, towbar design, vehicle design and towing equipment limitations. 7. Mudflaps cannot be fitted in conjunction with a full bodyskirt or rear skirt. 8. Load capacity = 75kg evenly distributed over 2 bars. Roof racks should be removed when not in use. 9. Requires fitment of roof racks at additional cost. 10. Only suitable for Go, Active and Elite models. Park assist is designed as a driver assist aid only and should not be used as a substitute for skilled driving and safe parking practices. While the park assist sensors monitor objects on approach, there may be occasions where blind spots affect the sensitivity of the sensors and as a result the area into which the vehicle is heading must be visually monitored by the driver at all times while parking.



Genuine Accessories	Go, Active	Elite	Highlander
Technology			
Auxiliary cable ²	•	•	•
iPad® holder ³	•	•	•
Interior			
Tailored carpet floor mats (set of 4) – black stitching	•	•	•
Tailored carpet floor mats (set of 4) – red stitching	•	•	•
Tailored carpet floor mats (set of 4) – yellow stitching	•	•	•
All weather floor mats	•	•	•
Dash mat	•	•	•
Carpet cargo liner	•	•	•
Rubber cargo liner	•	•	•
Cargo barrier	•	•	•
Cargo barrier front position strap	•	•	•
Laser shades (rear, set of 2)	•	•	•
Fabric rear bumper protector	•	•	•
Portable cooler ⁴ (12 volt, 15 litre)	•	•	•
Cargo organiser ⁵	•	•	•
Water resistant neoprene – seat cover (set of 2, front)	•	•	•
Exterior			
Tinted stylevisors (set of 4)	•	•	•
Paint protection film	•	•	•
Towbar, towball & trailer wiring harness ⁶	•	•	•
Alloy nudge bar - Alloy finish	•	•	•
Alloy nudge bar - Black Ace	•	•	•
Front mud flaps (set of 2) ⁷	•	•	•
Rear mud flaps (set of 2) ⁷	•	•	•
Styling			
Interior footwell lighting - Front and Rear - blue	•	•	•
Roof Racks and Lifestyle			
Whispbar™ quiet roof racks ⁸ – flush	•	•	•
Whispbar™ quiet roof racks ⁸ – through bars	•	•	•
Roof mounted bike carrier (wheel off) ⁹	•	•	•
Thule bike rack (wheel on) ⁹	•	•	•
Roof mounted kayak holder ⁹	•	•	•
Ski and snowboard carrier ⁹	•	•	•
Surfboard carrier ⁹	•	•	•
Safety			
First aid kit (4 Pocket)	•	•	•
Front corner park assist ¹⁰	•	•	•

Hyundai Auto Link Bluetooth®.

Hyundai Auto Link Bluetooth® (standard on Go, Active and Elite) is a smartphone app that lets you stay connected with your Kona.

The app connects with the Kona's pre-installed module to link the car to your smartphone via Bluetooth®, so you can drive smoothly.

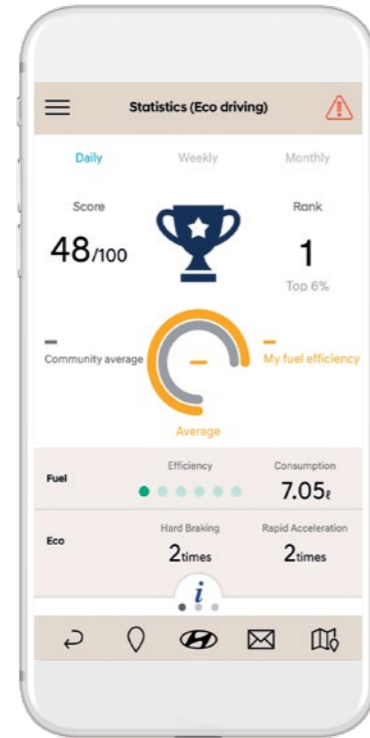
Become an economical driver.

- Keeps track of your driving habits and fuel efficiency on each trip.
- Presents vehicle health report and alerts you to any signs of faults.
- Remotely monitors your Kona's health.
- Provides analytical information so you can get the most out of your Kona.

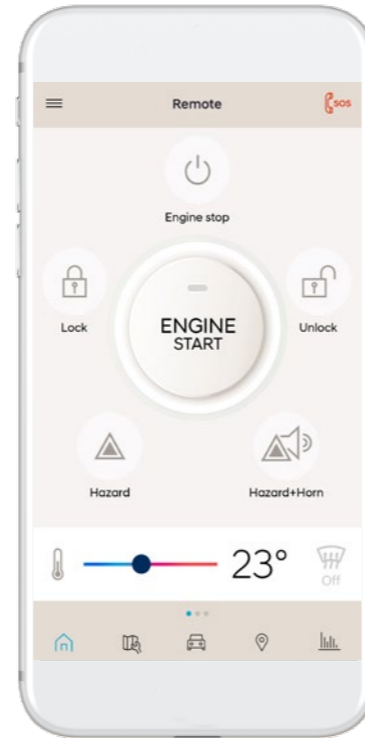
Help us care for your car.

- Service information and online service bookings at your fingertips.
- Easy access to Hyundai Customer Care.
- Compare your driving to other owners.
- Logs private and business trip stats for record keeping purposes.
- Alerts Roadside Assistance in case of a breakdown.
- Sends alert messages¹ to Customer Care or family/friends in case of an emergency.

For more information head to www.hyundai.com.au/auto-link



Auto Link Bluetooth®
Statistics eco driving screen.



Auto Link Premium
remote access screen.



Bluetooth® is a registered trademark of Bluetooth SIG, Inc.
1. Not all Hyundai Auto Link services are available everywhere, particularly in remote or enclosed areas, or on all vehicles, at all times. The operation of the location services may be affected by your location, activation or deactivation of location services on your mobile device, and the services provided by your telecommunications service provider. Some Hyundai Auto Link services may not be fully available if the GPS system or other mobile device features are not working.

Hyundai Auto Link		
Features	Bluetooth*	SIM (Premium)
Variant	Go, Active and Elite	Highlander
Status		
Owner driving analysis (driving habits, scores)	•	•
Eco driving (fuel efficiency rating, consumption) improvement status	•	•
CO2 emission improvement status (g/km)	•	•
Safe driving (rapid acceleration/hard braking) improvement status	•	•
Driving history (trip distance, travel time)	•	•
Vehicle health check (report on faults detected by type, time, date)	•	•
Tyre pressure and battery status	•	•
Refuelling history (refuel location, time, cost)	-	•
Real-time weather (based on vehicle location)	-	•
Search		
Display of Hyundai Dealer Network (select preferred dealer)	•	•
Access Customer Care (user view FAQs)	•	•
Log private and business trips for record keeping purposes	•	•
Instant search (latest and pre-owned Hyundai vehicles at preferred dealer)	•	•
Vehicle's parked location on map (based on GPS)	•	•
Vehicle's parking time alert notification	•	•
Fuel finder (locate cheapest fuel closest to location, receive fuel discounts)	-	•
Safety		
Emergency assist (send alert messages to Customer Care or family/friends)	•	•
Accident assist (keep log of data during an accident)	•	•
Scheduled service (due/overdue) alert	•	•
Automatic RSA alert (send location in case of a breakdown)	•	•
Geo-fencing alert	-	•
Set guard (theft control) mode	-	•
Valet alert	-	•
Sharing		
Social sharing (best trips with family/friends on social media)	•	•
Share vehicle location to family/friends	•	•
Remote Control		
Remote engine (on/off) start	-	•
Remote door (lock/unlock) control	-	•
Remote warning lights (hazard) control	-	•
Remote horn control	-	•
Remote climate (including defroster) control	-	•

Key:
• = Feature is available - = Feature is not available

Notes:
Use and availability of Hyundai Auto Link may be subject to additional fees, terms and conditions. Find out more on www.hyundai.com.au/owning/auto-link. Some services may not be fully available if the GPS system or other mobile device features are not working.

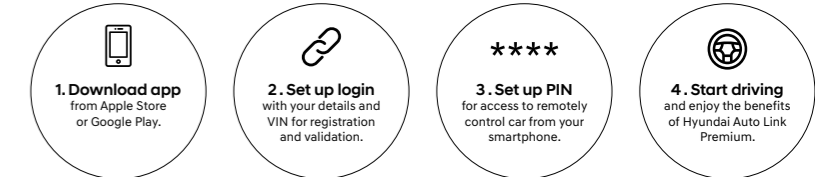
Hyundai Auto Link Premium.

Hyundai Auto Link Premium (standard on Highlander) is an upgraded version of the Bluetooth® app that lets you stay remotely connected with your Kona.

Your drive, your way, made better.

- Allows remote engine start from smartphone.
- Lets cars' doors, lights and climate control to be handled remotely.
- Sets geo-fencing, guard (theft control) and valet mode.

Download the app for your iOS and Android device² today.



2. Device compatibility list can be found at www.hyundai.com.au/owning/auto-link. Use and availability of the Hyundai Auto Link Premium app may be subject to additional fees, terms and conditions. Find out more on www.hyundai.com.au/owning/auto-link. Some Hyundai Auto Link Premium services may not be fully available if the GPS system or other mobile device features are not working.

CarPlan. The smarter way to finance your new Hyundai.

Life's full of surprises and while you won't always know what's around the next corner, with Hyundai CarPlan™ you'll always have the right car for the journey there. It's a smart and flexible way to have the vehicle that's perfect for you, even as your lifestyle changes.

Hyundai CarPlan™ has been developed by Hyundai Finance™ to provide flexibility at the end of your finance contract, letting you enjoy the new Hyundai experience again and again. At the end of your finance contract you can pay any amounts owing on your finance contract to keep your Hyundai or trade it in at your preferred Hyundai dealer to step into the latest Hyundai model and continue your journey with us. The choice is yours.

In a nutshell.



1. Choose your Hyundai model

Visit a participating Hyundai Dealer and select an eligible new or demonstrator Hyundai¹ that best suits your lifestyle.



2. Choose an eligible finance solution

You can choose your desired finance contract term of 36 or 48 months and the kilometres you intend to travel up to a maximum of 25,000 per year.

Our fixed rate loans are available with or without a deposit – whichever suits you.²



3. We'll then tell you:

- How much your regular payments will be over the finance contract term.³
- The Guaranteed Trade in Value for your new Hyundai. The Guaranteed Trade in Value is the value of your new Hyundai at the end of your finance contract as determined by Hyundai Finance™ subject to Fair Wear and Tear conditions and agreed kilometres not being exceeded.
- We'll also give you a copy of the Fair Wear & Tear Guidelines, setting out the condition requirements you'll need to maintain over the finance contract term to avoid any adjustments to your Guaranteed Trade in Value under the GTV terms.⁴

It's all about choice.

We know that everyone's lifestyle and situation is different, so we give you two different options to choose from when your contract comes to an end: keep your Hyundai, or trade it for a brand new one¹ knowing your Guaranteed Trade in Value.



1.

Keep your Hyundai by paying any amounts owing on your finance contract or applying through Hyundai Finance™ to refinance the loan residual balance.



2.

Trade in your Hyundai at your preferred Hyundai dealer and apply for another Hyundai CarPlan™ giving you the chance to step into the latest Hyundai model and continue your journey with us.



1. The feature is available on all new and demonstrator Hyundai vehicles on selected models only. Please verify with your dealership which vehicles are eligible for the programme.
 2. Please read the full terms and conditions. Please consider whether these products and services are appropriate for your circumstances. Before acting on any of the information in this brochure, please seek independent tax advice. Full terms and conditions are available upon application. Available only to approved applicants of Hyundai Finance™. Subject to credit assessment and for consumer applications, responsible lending criteria. Fees and charges apply. Fleet, government, rental buyers, hire car and chauffeur companies are excluded. Available at participating Hyundai dealers.
 3. Your total interest charged may be higher if you choose the Guaranteed Trade in Value feature for your loan, compared to a loan without the feature.
 4. The Guaranteed Trade in Value is not a representation by Hyundai Finance™ as to the likely market value of your vehicle as at the end of your finance contract. If the Guaranteed Trade in Value applies and the vehicle is not returned in an acceptable condition, as defined in the terms and conditions or exceeds kilometre restrictions, the Guaranteed Trade in Value will be reduced and you'll be required to pay the difference.

How does Hyundai's new CarPlan differ from typical Hyundai financing?



Greater confidence

Hyundai CarPlan™ will ensure the amount you receive on trade in satisfies the final repayment, even where the value of the trade in is less than the final repayment amount¹. If the trade in valuation is higher than the Hyundai CarPlan™ value, the difference can be used as equity towards your new or demonstrator Hyundai when you purchase it².



A personally tailored solution

You may decide on the term for your finance contract, the deposit you would like to pay (if any) and the kilometres you intend to travel.



Greater flexibility

At the end of the finance contract term, you'll have the choice to keep your Hyundai, or trade it for a brand new one².



More options

You have the option to include things like Pre-Paid Service Plan³, insurance and accessory costs as part of your fixed-rate loan agreement.

Maintaining your vehicle.

To ensure you enjoy the full benefits of the Hyundai CarPlan™, your Hyundai must be in an acceptable condition when you are trading it in for your new Hyundai² and must not exceed the kilometre limit you have selected. Of course, we also understand that some reasonable wear and tear is to be expected, but it needs to remain within the provisions of your Hyundai CarPlan™ contract and Fair Wear & Tear Guidelines.

Where the vehicle is not in acceptable condition or where you have exceeded your kilometre limit, the Guaranteed Trade in Value of your vehicle will be reduced.

Is Hyundai's new CarPlan right for you?

Hyundai CarPlan™ is just one of many options available from Hyundai Finance™, so there may be another product that suits your individual needs better. Have a chat to your participating Hyundai Dealer about what's right for you.



1. The Guaranteed Trade in Value is not a representation by Hyundai Finance™ as to the likely market value of your vehicle as at the end of your finance contract. If the Guaranteed Trade in Value applies and the vehicle is not returned in an acceptable condition, as defined in the terms and conditions or exceeds kilometre restrictions, the Guaranteed Trade in Value will be reduced and you'll be required to pay the difference.

2. The feature is available on all new and demonstrator Hyundai vehicles on selected models only. Please verify with your dealership which vehicles are eligible for the programme.

3. Pre-Paid Service Plan: for scheduled services only, including parts. Does not include fair wear and tear items. For full terms and conditions visit hyundai.com.au/pre-paid

The Hyundai CarPlan from Hyundai Finance is a feature which ensures you receive the Guaranteed Trade in Value (determined by Hyundai Finance) at the end of the term of your contract when you trade it in at a participating Hyundai Dealer in accordance with the terms and conditions.

To exercise the feature your vehicle must be inspected and assessed by a participating Hyundai dealer at the end of the term of your finance contract. Adjustments to the value may apply. You receive the Guaranteed Trade in Value for the car if you exercise the feature at the end of the term and purchase a new or demonstrator Hyundai at the same time. The amount you receive on trade in will satisfy the final repayment, even where the trade in is less than the repayment amount.

Relax, we'll take it from here.

There's a reason why our iCare program is so highly regarded. We built Hyundai iCare around one simple, innovative idea. That comprehensive on-the-road care should come standard with every car – not just as an “optional extra”.

Our five-year, unlimited kilometre warranty¹ means you've got the freedom to go ahead and drive without having to keep an eye on the odometer. Imagine knowing the maximum price of your next scheduled service, before pulling into the service centre. That's the advantage of our Lifetime Service Plan² – a clever Hyundai initiative that gives you transparency and peace of mind for the life of your car. No hidden fees and surprises.

Since every new Hyundai is built to the highest standards, we've got the confidence to offer comprehensive customer service without exception, including our 24/7 Roadside Support Plan³ for up to ten years when you service with this.



iCare



1. **5 year/unlimited Km warranty:** Applies to new passenger vehicles used for private/domestic purposes. Excludes vehicles used at any time for “commercial application” as defined in the vehicle warranty policy, for which a 5 year/130,000km (whichever occurs first) warranty applies. Refer to full warranty terms & conditions, for details and exclusions. 2. **Lifetime Service Plan:** For the benefit of Hyundai owners, Hyundai provides online quotes, which specify the maximum price applicable for a vehicle's next scheduled maintenance service at a participating authorised Hyundai dealer and using genuine Hyundai parts (where required). Online quotes are available at www.hyundai.com.au, apply for a stated effective period only and may change after that effective period without notice. Standard scheduled maintenance services are of limited scope. The benefit of online quotes is available for all Hyundai's, for their lifetime. 3. **Roadside Support Plan:** Complimentary 12 months Roadside Support when you purchase a new Hyundai passenger vehicle (excluding rental buyers). Further Roadside Support extensions are available, each for 12 months from the date of a scheduled maintenance service at a participating authorised Hyundai dealer (unless vehicle is more than 108 months (9 years) from the original new car sale date, in which case entitlement to Roadside Support ends when vehicle reaches 120 months (10 years) from original new car sale date).



Kona.



Big help, for little Aussies.

Every time a new car is sold at one of our Dealerships, both Hyundai and the Dealer will donate part of the sale price to Hyundai Help for Kids™*

Hyundai Help for Kids™* offers funding to child-focused organisations and charities working to improve the lives of children all over Australia – from supporting community initiatives, to providing much-needed medical equipment.

So when you buy a Hyundai, you're buying more than just a car. Together with Hyundai Help for Kids™* you're empowering thousands of young Australians and giving them a better future.



*Hyundai Help for Kids™ is a registered trademark of Hyundai Motor Company.

Kona.

Australia, in our DNA.

We're one of the biggest car manufacturers in the world – and one of the fastest growing global car brands.

We're also the only car company in the world producing its own steel, because we know the best steel makes for the strongest cars.

That's why we source the majority of our high quality iron ore from right here, in Australia's backyard. So now, when you buy a new Hyundai, you know you're driving a car that's directly connected to home.



Kona.

Hyundai Kona		
Engine	2.0 Atkinson MPI 2WD	1.6 T-GDi AWD
Engine family	Nu	Gamma
Configuration	Transverse front mounted driving front wheels	Transverse front mounted driving front and rear wheels
Cylinder capacity	2.0 litres (1,999 cc)	1.6 litres (1,591 cc)
Number of cylinders	4 in-line	4 in-line
Valve system	16 Valve (HLA), Atkinson cycle	16 Valve (MLA)
Intake system	2-step variable induction system	Turbocharger
Maximum power	110 kW @ 5,200 RPM	130 kW @ 5,500 RPM
Maximum torque	180 Nm @ 4,500 RPM	265 Nm @ 1,500 - 4,500 RPM
Fuel system	MPI (Multi Point Injection)	T-GDi (Turbo Gasoline Direct Injection)
Fuel type	91 RON (ULP), E10 compatible	91 RON (ULP), E10 compatible
Emissions standard	Euro 5	Euro 5
Bore x stroke	81.0 mm x 97.0 mm	77.0 mm x 85.44 mm
Compression ratio	12.5:1	10:1
Transmission	2.0 Atkinson MPI 2WD	1.6 T-GDi AWD
All Wheel Drive (AWD) System	-	Active on-demand 4WD with 50/50 front & rear lock mode
Automatic	6 speed automatic	-
Dual Clutch Transmission (DCT)	-	7 speed DCT (dry clutch) with sequential manual mode
Gear ratio	Automatic	DCT
1st	4.400	3.643
2nd	2.726	2.174
3rd	1.834	1.826
4th	1.392	1.024
5th	1.000	0.809
6th	0.774	0.854
7th	-	0.717
Reverse	3.440	4.696
Final	3.510	4.643 (1st, 2nd, 4th, 5th) 3.611 (3rd, 6th, 7th & Reverse)

Engine / transmission availability	2.0 Atkinson MPI 2WD	1.6 T-GDi AWD
	Automatic	DCT
Go	•	•
Go with Safety Pack	•	•
Active	•	•
Active with Safety Pack	•	•
Elite	•	•
Highlander	•	•
Steering	Column mounted Motor Driven Power Steering (C-MDPS), rack & pinion	
Type	Column mounted Motor Driven Power Steering (C-MDPS), rack & pinion	
Minimum turning circle diameter between kerbs / walls	10.6 m	
Number of steering wheel turns lock to lock	2.5	
Suspension	2.0 Atkinson MPI 2WD	1.6 T-GDi AWD
Front	MacPherson strut	
Rear	Torsion beam axle	Multi-link

Key:
• = Feature is available on trim ◦ = Feature is available on trim only as part of an option pack - = Feature is not available on trim

Hyundai Kona				
Brakes	2.0 Atkinson MPI 2WD		1.6 T-GDi AWD	
	Automatic		DCT	
	Dual-diagonal, split circuit, power assisted with Electronic Brakeforce Distribution (EBD) and Brake Assist System (BAS)			
System	Dual-diagonal, split circuit, power assisted with Electronic Brakeforce Distribution (EBD) and Brake Assist System (BAS)			
Front brake type	Ventilated disc			
Front disc dimensions	280 mm x 23 mm		305 mm x 25 mm	
Rear brake type	Solid disc			
Rear disc dimensions	262 mm x 10 mm		284 mm x 10 mm	
Weight	2.0 Atkinson MPI 2WD		1.6 T-GDi AWD	
	Automatic		DCT	
Kerb weight - lightest	1290 kg		1414 kg	
Kerb weight - heaviest	1383 kg		1507 kg	
Gross Vehicle Mass (GVM)	1830 kg		1940 kg	
Permissible Axle Weight (PAW) - front	1030 kg		1030 kg	
Permissible Axle Weight (PAW) - rear	1055 kg		1055 kg	
Roof rack load limit	80 kg		80 kg	
Towing capacity	2.0 Atkinson MPI 2WD		1.6 T-GDi AWD	
	Automatic		DCT	
Braked	1300 kg		1250 kg	
Unbraked	600 kg		600 kg	
Maximum towball weight	130 kg		130 kg	
Fuel consumption*	2.0 Atkinson MPI 2WD		1.6 T-GDi AWD	
	Automatic		DCT	
Combined (L/100km)	7.2		6.7	
Urban (L/100km)	9.7		8.0	
Extra Urban (L/100km)	5.8		6.0	
CO ² - combined (g/km)	169		153	
Fuel tank volume	50 L			

*Source: Australian Design Rule 81/02 static laboratory combined average city and highway cycle test. Real world fuel consumption will vary depending on a combination of driving habits, the condition of the vehicle, and other factors such as road, traffic and weather conditions. ADR 81/02 test results are meant for comparison purposes only.

Dimensions	Active	Active with Safety Pack	Elite	Highlander
Exterior				
Length	4165 mm			
Width	1800 mm			
Height (with roof rails)	1550 mm (1565 mm)			
Wheelbase	2600 mm			
Wheel track - front / rear	1575 mm / 1584 mm	1575 mm / 1584 mm	1563 mm / 1572 mm	1559 mm / 1568 mm
Minimum ground clearance (based on kerb weight)	170 mm			
Approach / departure / ramp break over angle	17° / 29° / 16°			
Interior				
Head room front / rear	1005 / 961 mm			
Leg room front / rear	1054 / 880 mm			
Shoulder room front / rear	1410 / 1385 mm			
Hip room front / rear	1355 / 1326 mm			
Cargo area - VDA (minimum / maximum)	361 L / 1143 L			
Wheels & tyres	Go	Active	Elite	Highlander
Wheel type	Steel	Alloy	Alloy	Alloy
Wheel dimensions	16 x 6.5J +44	16 x 6.5J +44	17 x 7.0J +50	18 x 7.5J +52
Tyre dimensions	205/60 R16 92H	205/60 R16 92H	215/55 R17 94V	235/45 R18 94V
Spare wheel type	Temporary space saver	Temporary space saver	Temporary space saver	Temporary space saver

Hyundai Kona				
Driving convenience	Go	Active	Elite	Highlander
Cruise control	•	•	•	•
Hyundai Auto Link	•	•	•	-
Hyundai Auto Link Premium	-	-	-	•
One touch turn signal - 3, 5, or 7 flashes	•	•	•	•
Rain sensing wipers	-	-	•	•
Rear wiper - 2-stage, with auto wipe on reverse	•	•	•	•
Smart Key with push button start	-	-	•	•
Steering wheel mounted controls - audio, phone, cruise control & trip computer	•	•	•	•
Tilt & telescopic steering column	•	•	•	•
Driving engagement	Go	Active	Elite	Highlander
Drive Mode - 3 settings (Comfort, Eco, Sport)	•	•	•	•
Active safety	Go	Active	Elite	Highlander
Electronic Stability Control (ESC) including:				
Anti-lock Braking System (ABS)	•	•	•	•
Brake Assist System (BAS)	•	•	•	•
Electronic Brakeforce Distribution (EBD)	•	•	•	•
Downhill Brake Control (DBC)	•	•	•	•
Hill-start Assist Control (HAC)	•	•	•	•
Traction Control System (TCS)	•	•	•	•
Vehicle Stability Management (VSM)	•	•	•	•
Hyundai SmartSense™ including:				
Blind-Spot Collision Warning (BCW)	◦ ¹	◦ ¹	•	•
Driver Attention Warning (DAW)	◦ ¹	◦ ¹	•	•
Forward Collision-Avoidance Assist (FCA)	◦ ¹	◦ ¹	•	•
High Beam Assist (HBA)	-	-	-	•
Lane Keeping Assist (LKA)	◦ ¹	◦ ¹	•	•
Rear Cross-Traffic Collision Warning (RCCW)	◦ ¹	◦ ¹	•	•
Other features				
Emergency Stop Signal (ESS)	•	•	•	•
Parking Distance Warning-Front (PDW-F) - 4 sensors, with guidance display	-	-	-	•
Parking Distance Warning-Rear (PDW-R) - 4 sensors, with guidance display	-	•	•	•
Rear view camera with dynamic guide lines	•	•	•	•
Tyre Pressure Monitoring System (TPMS) - individual tyre pressure readout	•	•	•	•
Passive safety	Go	Active	Elite	Highlander
Airbags				
Front airbags - driver & front passenger	•	•	•	•
Side (thorax) airbags - driver & front passenger	•	•	•	•
Side curtain airbags - 1st & 2nd rows	•	•	•	•
Roll-over Sensor	•	•	•	•
Doors				
Impact sensing auto door unlock	•	•	•	•
Rear door child safety locks	•	•	•	•
Seatbelts				
Pretensioners, load limiters & height adjustable upper mounts on front seat belts	•	•	•	•
Pretensioners & load limiters on rear (outboard) seat belts	•	•	•	•
Seat belt reminder - front & rear seatbelts	•	•	•	•
Seating				
Height adjustable front head restraints with tilt function	•	•	•	•
Height adjustable rear head restraints	•	•	•	•
ISOFIX child restraint anchors (rear outboard seats)	•	•	•	•
Top tether child restraint anchors (rear) - 3 anchors	•	•	•	•

Key:
• = Feature is available on trim ◦ = Feature is available on trim only as part of an option pack - = Feature is not available on trim

Hyundai Kona				
Security	Go	Active	Elite	Highlander
Security system				
Active lock/unlock operation (user configurable)	•	•	•	•
Anti-theft alarm	•	•	•	•
Central locking	•	•	•	•
Engine immobiliser	•	•	•	•
Remotes				
Keyless entry remote - 2x	•	•	-	-
Smart Key remote - 2x	-	-	•	•
Multimedia system	Go	Active	Elite	Highlander
Functions				
Apple CarPlay™ ² & Android™ Auto ³ compatibility	•	•	•	•
Bluetooth® phone connectivity	•	•	•	•
Satellite navigation	-	•	•	•
SUNA™ Live Traffic Updates	-	•	•	•
Touch screen - 7" display	-	-	-	-
Touch screen - 8" display	-	•	•	•
Speakers				
Audio system - 6 speakers	•	-	-	-
Krell™ premium audio system - 8 speakers with external amplifier	-	•	•	•
Audio/media sources				
AM/FM radio	•	•	•	•
Digital radio (DAB+)	-	•	•	•
Radio Data System (RDS)	•	•	•	•
AUX / USB audio input with iPod® compatibility	•	•	•	•
Bluetooth® audio streaming	•	•	•	•
Occupant comfort & convenience	Go	Active	Elite	Highlander
Upholstery/trim				
Leather appointed* interior - steering wheel & gear knob	-	•	-	-
Leather appointed* interior - seats, steering wheel & gear knob	-	-	•	•
Front seats				
Driver's seat - height adjustable	•	•	•	•
Driver's seat - power adjustable - 10-way (including 2-way lumbar support)	-	-	-	•
Passenger's seat - power adjustable - 8-way	-	-	-	•
Front centre console storage cubby - power outlets - 1 x 12V outlets	•	•	•	•
Front centre console storage cubby - USB power outlet	•	•	•	•
Front centre console - wireless charging pad (Qi standard) ⁵	-	-	-	-
Grip handles - 1x (passenger)	•	•	•	•
Rear seats				
Centre fold down armrest	-	•	•	•
Grip handles - 2x	•	•	•	•
Windows/shades				
Glass sunroof - tilt and slide panel	-	-	-	• ⁶
Power windows - front & rear	•	•	•	•
One touch window down function - driver's window	•	•	•	-
One touch window up & down function with anti-pinch safety feature - driver's window	-	-	•	•
Solar control glass	-	-	•	•
Rear privacy glass	-	-	•	•
Sunvisor (extendable) - driver and front passenger	•	•	•	•

Notes:
1. Feature only available when fitted with optional SmartSense™ Pack. 2. **Apple CarPlay** requires iPhone 5 or subsequent model (lightning cable) in order to operate. 3. **Android Auto** requires a device with Android 5.0 operating system or subsequent version in order to operate. 4. Finishes specified as leather may contain elements of genuine leather, polyurethane leather (leather substitute) or man-made materials, or a combination thereof. 5. Wireless charging requires a Qi-enabled smartphone or adapter in order to operate. 6. Feature not available when Two-tone roof is optioned. 7. Feature is available on trim only as part of an option interior (acid yellow and red).

Hyundai Kona				
Vision & sight	Go	Active	Elite	Highlander
Interior mirror				
Electro-chromatic Mirror (ECM) - auto-dimming	-	-	-	•
Exterior mirrors				
Heated	◦ ¹	◦ ¹	•	•
Power adjustable	•	•	•	•
Power folding with auto fold function	◦ ¹	◦ ¹	•	•
Instrument cluster/driving displays				
Head-Up Display (HUD)	-	-	-	•
Instrument cluster - 3.5" TFT LCD with trip computer & digital speedometer	•	•	•	-
Supervision cluster - 4.2" TFT colour LCD with trip computer & digital speedometer	-	-	-	•
Ventilation & heating				
Air conditioning				
Climate control - single zone with auto defog function	-	-	•	•
Manual controls	•	•	-	-
Cabin air filter	•	•	•	•
Cooling/heating vents - rear floor	•	•	•	•
Front seats				
Air ventilated front seats	-	-	-	•
Heated front seats	-	-	-	•
Other features				
Heated rear windshield	•	•	•	•
Heated steering wheel	-	-	-	•
Exterior styling				
Front				
Front bumper garnish insert - silver	◦ ¹	◦ ¹	•	•
Front grille surround - black	•	•	-	-
Front grille surround - chrome	-	-	•	•
Front grille - black	•	•	-	-
Front grille - carbon grey	-	-	•	•
Side				
Side garnish insert - silver	-	-	•	•
Rear				
Spoiler - roof colour matched, tailgate mounted	•	•	•	•
Skid plate - silver	-	-	•	•
Tailgate garnish insert - chrome	-	-	•	•
Interior styling				
Treatments				
Black headlining	-	-	◦ ⁷	◦ ⁷
Cloth headlining	-	-	-	• ⁶
Piano black finish (interior door handles)	-	-	◦ ⁷	◦ ⁷
Piano black inserts (steering wheel)	-	-	◦ ⁷	◦ ⁷
Piano black surrounds (HVAC dials, air vents and transmission housing)	-	-	◦ ⁷	◦ ⁷
Coloured stitching & piping - acid yellow / red (seats, steering wheel and gearshift boot)	-	-	◦ ⁷	◦ ⁷
Coloured seatbelts - acid yellow / red	-	-	◦ ⁷	◦ ⁷
Metallic acid yellow / red inserts (air vents, start button and transmission housing)	-	-	◦ ⁷	◦ ⁷
Materials				
Premium materials - door centre trim	-	-	•	•


Key:
• = Feature is available on trim ◦ = Feature is available on trim only as part of an option pack - = Feature is not available on trim

Hyundai Kona				
Lighting	Go	Active	Elite	Highlander
Exterior lighting - front				
Fog lights	-	-	•	•
Daytime Running Lights (DRL) - LED	•	•	•	•
Headlight functions - automatic dusk sensing with escort and welcome	•	•	•	•
Headlight type - LED (low/high beam)	-	-	-	•
Headlight type - projector beam	•	•	•	-
Positioning lights - LED	•	•	•	•
Static bending lights	-	-	-	•
Exterior lighting - rear				
Fog light	•	•	•	•
High Mount Stop Light (HMSL) - LED	•	•	•	•
Rear combination lights - LED (bulb indicator and reverse lights)	-	-	-	•
Exterior lighting - others				
Side repeaters - LED, integrated into side mirrors	•	•	•	•
Interior lighting - front				
Front room lights and map lights	•	•	•	•
Vanity mirror lights	•	•	•	•
Glovebox compartment light	•	•	•	•
Interior lighting - rear				
Centre room light	•	•	•	•
Interior lighting - others				
Cargo area light	•	•	•	•
Interior light fade-out delay	•	•	•	•
Storage solutions				
Front seats				
Cup holders - centre console	•	•	•	•
Front seat back pockets	-	-	•	•
Glovebox compartment	•	•	•	•
Retractable sunglasses compartment	•	•	•	•
Ticket holders - sunvisors (driver and front passenger)	•	•	•	•
Rear seats				
Coat hooks - 1x	•	•	•	•
Cup holders - armrest	-	•	•	•
Rear seating split folding - 60:40	•	•	•	•
Boot/Luggage area				
Bag hooks - 1x	•	•	•	•
Cargo shelf	•	•	•	•
Luggage compartment - 4x mounting points	•	•	•	•
Luggage net	-	-	•	•
Side storage recess - right side	•	-	-	-
Others				
Doors - map pockets and bottle bulges (front and rear)	•	•	•	•
Roof Rails	•	•	•	•
Option packages				
SmartSense™ pack				
Blind-Spot Collision Warning (BCW)				
Driver Attention Warning (DAW)				
Forward Collision-Avoidance Assist (FCA)				
Lane Keeping Assist (LKA)	◦	◦	Features included as standard	Features included as standard
Rear Cross-Traffic Collision Warning (RCCW)				
Heated exterior mirrors				
Power folding exterior mirrors with auto fold function				
Two-tone roof				
Phantom Black two-tone roof and side mirrors	-	-	-	◦



Kona.

 Like us at facebook.com/hyundaiaustralia

 Follow us at twitter.com/hyundaiaus

Hyundai Motor Company Australia

394 Lane Cove Road, Macquarie Park, NSW Australia 2113

www.hyundai.com.au

Hyundai Motor Company (HMC) and the Hyundai Motor Company Australia (HMCA) each reserve the right to alter vehicle specifications and equipment levels without notice. Some equipment featured on the cars in this brochure may not be available in Australia or may be optional. To the extent permitted by law, neither HMC nor HMCA shall be liable to any person as a result of reliance on the content of this brochure. Please consult your Hyundai Dealer for the latest specifications, equipment levels, options, prices, colours and vehicle availability. Metallic and mica paint are optional extras. Note: information in this brochure is current as at 05/09/18. Part No. OS0918B