

**GMC**

WE ARE PROFESSIONAL GRADE

# S A V A N A

2016



**GMC** WE ARE PROFESSIONAL GRADE





# S A V A N A

Precision matters. It matters in every pound-foot of torque, every millimeter of fit and finish and every advance in technology. It drives us to reimagine solutions and create rewarding driving experiences. It's why Savana is engineered to keep you organized and your passengers connected and traveling in comfort. Whether you're carrying people or cargo, Savana's Professional Grade versatility and reliability go beyond mere utility.



EXTERIOR | 2

INTERIOR | 8

PERFORMANCE | 12

SECURITY | 14

SELECTION | 16





**SAVANA PASSENGER VAN IN QUICKSILVER METALLIC**  
shown with available equipment.

## BECAUSE EVERY PASSENGER IS PRECIOUS CARGO.

GMC engineers anticipated your needs and what your passengers want with Savana Passenger Vans. Featuring a range of models with configurations for either 12 or 15 passengers, Savana has the capacity to accommodate what your business demands. Savana also offers numerous safety features for your protection, including a reinforced safety cage and standard air bags.<sup>1</sup> Here are other features of Savana Passenger Vans.

**PASSENGER-SIDE  
SLIDING DOOR**  
(AVAILABLE)

**REAR PARK ASSIST**  
(AVAILABLE)

**REAR VISION  
CAMERA SYSTEM**  
(AVAILABLE)

**ONSTAR 4G LTE WITH  
BUILT-IN WI-FI® HOTSPOT<sup>2</sup>**  
(AVAILABLE)

<sup>1</sup>Always use safety belts and the correct child restraint for your child's age and size, even with air bags. Even in vehicles equipped with the Passenger Sensing System, children are safer when properly secured in a rear seat in the appropriate infant, child or booster seat. Never place a rear-facing infant restraint in the front seat of any vehicle equipped with an active frontal air bag. See your Owner's Manual and child safety seat instructions for more safety information. <sup>2</sup>Devices must be WPA2-compliant with active OnStar service and data plan. Wi-Fi devices manufactured prior to 2006 may not be compatible. Please consult your device manufacturer for information regarding the WPA2 security protocol and Wi-Fi device compatibility. Visit [onstar.com](http://onstar.com) for details and system limitations.



## ENGINEERED AS IF YOUR BUSINESS IS RIDING ON IT. BECAUSE IT IS.

The Savana Cargo Van is designed to offer the versatility you demand to accomplish any job. When it comes to moving cargo of all shapes and sizes, it's engineered in multiple configurations, with as much as 10,000 lbs of maximum trailering strength<sup>1</sup> and 313.9 cu. ft. of maximum cargo volume.<sup>2</sup> Here are a few more ways Savana Cargo Van helps you conduct your business.

FULL-WIDTH  
REAR DOORS

SIX NEW CARGO  
TIE-DOWN D-RINGS

REAR PARK ASSIST  
(AVAILABLE)

REAR VISION CAMERA  
SYSTEM (AVAILABLE)

<sup>1</sup>Before you buy a vehicle or use it for trailering, carefully review the trailering section of the Owner's Manual. The weight of passengers, cargo and options or accessories may reduce the amount you can tow. <sup>2</sup>Extended-wheelbase models with passenger seat removed. Cargo and load capacity limited by weight and distribution.



SAVANA CARGO VAN IN SUMMIT WHITE  
shown with available equipment.



## USER FRIENDLY.

---

Savana Cargo and Passenger Vans are engineered to make them easy to load and unload with equipment or people. To reduce the effort necessary to access your tools and cargo, both vans offer several laborsaving door options. No matter which one you choose, you'll gain the helping hand you and your crews deserve.





**REAR DOORS** Savana's rear doors open 165 degrees and feature a low lift-over height, so it's easy to load up its cargo space—up to a maximum of 313.9 cu. ft. on extended-wheelbase models.<sup>1</sup>



**SAVANA PRO PACKAGE** Side-access storage bins on the available Savana Pro Package maximize underused areas in standard vans. It provides plenty of cargo space and a flat load floor, so it easily adapts to your needs.



**PASSENGER-SIDE SLIDING DOOR** Open the available passenger-side sliding cargo door to access Savana's vast cargo area. A wide variety of optional equipment is available that's purpose-built for the tools and materials of practically every trade.

<sup>1</sup>Extended-wheelbase Cargo Van models with passenger seat removed. Cargo and load capacity limited by weight and distribution.





ONSTAR 4G LTE WITH  
BUILT-IN WI-FI HOTSPOT<sup>1</sup>  
(AVAILABLE)

120-VOLT  
POWER OUTLET

POWER WINDOWS  
AND DOOR LOCKS

SAVANA INTERIOR IN MEDIUM PEWTER  
shown with available equipment.



## YOUR MOBILE OFFICE JUST GOT FASTER.

---

The power of staying connected drives your business. That's why we've turned it up for you and your passengers. The 2016 Savana now offers new available OnStar with 4G LTE and built-in Wi-Fi hotspot<sup>1</sup> (3 months or 3GB data trial, whichever comes first). This means a fast Internet connection for Web-enabled devices from up to 50 feet away from Savana. It's reliable, easy to use and capable of connecting up to seven devices. We've also added a new Color Touch Navigation<sup>2</sup> Radio with IntelliLink.<sup>3</sup> The available system provides smartphone integration and voice-activated control of communication and guidance controls.

<sup>1</sup>Devices must be WPA2-compliant with active OnStar service and data plan. Wi-Fi devices manufactured prior to 2006 may not be compatible. Please consult your device manufacturer for information regarding the WPA2 security protocol and Wi-Fi device compatibility. Vehicle must be started or in accessory mode to access Wi-Fi. Visit [onstar.com](http://onstar.com) for details and system limitations. <sup>2</sup>Map coverage available in the United States, U.S. Virgin Islands, Puerto Rico and Canada. <sup>3</sup>Full functionality requires compatible Bluetooth® and smartphone. Some devices require USB connectivity.



## WE'VE UPGRADED YOUR ACCOMMODATIONS.

With two wheelbases and minimal rear wheel-well interference, Savana Cargo Vans take utility to a new level of functionality and comfort. There's a maximum 313.9 cu. ft. of cargo volume<sup>1</sup> on extended-wheelbase models, while Savana Passenger Van offers two wheelbase choices, two model series and two seating arrangements for up to 15 people. And now, both vans offer technologies to keep you informed, in touch and entertained wherever you go.



**ONSTAR WI-FI HOTSPOT<sup>2</sup>** Available OnStar with 4G LTE and built-in Wi-Fi hotspot capability (for 3 months or 3GB data trial, whichever comes first) means an Internet connection for Web-enabled devices from up to 50 feet away from Savana. It's reliably fast, easy to use and handles up to seven compatible devices.

**INTELLILINK<sup>3</sup>** Included with available Color Touch Navigation,<sup>4</sup> IntelliLink provides smartphone integration and voice-activated control of your communication and entertainment selections, including placing a call, changing stations, streaming available Internet radio stations Pandora<sup>®</sup> and Stitcher<sup>™</sup> SmartRadio or accessing your music library. It also converts incoming text messages into voice messages.

**BLUETOOTH<sup>5</sup>** It's available and uses voice recognition to dial phone numbers and name tags.

**COLOR TOUCH NAVIGATION<sup>4</sup> RADIO WITH INTELLILINK<sup>3</sup>**

The available NAV system, which includes IntelliLink, adds multiple map views. It also features 3 months of NavTraffic<sup>6</sup> so you'll get continuously updated traffic information incorporated into the Navigation System.

**TILT-ADJUSTABLE STEERING WHEEL** This available feature allows you to position the wheel to your liking. A leather-wrapped steering wheel with integrated radio controls is also available.

**STEERING-WHEEL-MOUNTED RADIO CONTROLS** These available controls adjust audio functions and, when Savana is equipped with the available USB port,<sup>7</sup> they also control many of the features of compatible devices.

**SIRIUSXM SATELLITE RADIO<sup>8</sup>** Enjoy SiriusXM Satellite Radio with a 3-month trial subscription to the XMPremier Package. Available on WT, LS and LT models.



**INTERIOR SEATING** Savana Passenger Vans offer seating for 12 or 15. The 2500 and 3500 Cargo Vans offer an available five-passenger configuration.

**POWER WINDOWS AND DOOR LOCKS** Standard on all Savana models are convenient power windows and door locks.

**ULTRASONIC REAR PARK ASSIST** This available system alerts you to certain objects up to 8 feet behind the vehicle at speeds of less than 5 mph.

**POWER SUPPLY** A new standard 120-volt household-style outlet keeps your devices powered up.

**CLIMATE CONTROL** All models include front air conditioning, while rear air conditioning is available on 2500 Series models and is standard on 3500 Series extended-wheelbase models. A rear auxiliary heater is available with the LS trim, included with rear air conditioning and standard on 3500 Series extended-wheelbase models.

**COMMAND CENTER** In the 2016 Savana, all instrumentation and controls are positioned to maximize your efficiency, including the new 120-volt power outlet.

**REAR VISION CAMERA SYSTEM** This available system (shown in the available navigation radio screen) makes it easier to back up to a trailer or negotiate a tight space. The Rear Vision Camera System does not replace driver vision. Please use proper care when backing up.

**PERSONALIZATION** Ask your GMC dealer about the purpose-built applications designed to transform Savana Cargo Van's interior into a workshop on wheels.

**DESIGNED FOR DISABILITIES ACT (ADA) COMPLIANCE**  
To comply with ADA, Savana is designed to be fitted with ADA-compliant wheelchair and seating configurations, without compromising interior comfort or convenience. (Vehicles contain equipment from an independent supplier. See the Important Words page for information about alterations and warranty.)

<sup>1</sup>Extended-wheelbase Cargo Van models with passenger seat removed. Cargo and load capacity limited by weight and distribution. <sup>2</sup>Devices must be WPA2-compliant with active OnStar service and data plan. Wi-Fi devices manufactured prior to 2006 may not be compatible. Please consult your device manufacturer for information regarding the WPA2 security protocol and Wi-Fi device compatibility. Vehicle must be started or in accessory mode to access Wi-Fi. Visit [onstar.com](http://onstar.com) for details and system limitations. <sup>3</sup>Full functionality requires compatible Bluetooth and smartphone. Some devices require USB connectivity. Data plan rates apply. <sup>4</sup>Map coverage available in the United States, U.S. Virgin Islands, Puerto Rico and Canada. <sup>5</sup>Go to [my.gmc.com/learn](http://my.gmc.com/learn) to find out which phones are compatible with the vehicle. <sup>6</sup>If you subscribe after your trial period, *subscriptions are continuous until you call SiriusXM to cancel.* See SiriusXM Customer Agreement for complete terms at [siriusxm.com](http://siriusxm.com). Other fees and taxes will apply. All fees and programming subject to change. For more information about NavTraffic, visit [siriusxm.com/navtraffic](http://siriusxm.com/navtraffic). <sup>7</sup>Not compatible with all devices.

## IN COMMAND AND UNDER CONTROL.

We know performance drives your business. That's why Savana offers the widest choice of Professional Grade V-8s in its class, the most powerful heavy-duty diesel<sup>1</sup> and fuel options such as E85,<sup>2</sup> biofuels and Compressed Natural Gas (CNG).



### VORTEC

**VORTEC ENGINES** These technologically advanced gas-powered engines in the Vortec family range from a 4.8L V-8 to a 6.0L V-8. Each is designed to deliver power, torque and efficiency to meet your needs for confident daily driving, passing and trailering.

**VORTEC 4.8L V-8 VVT (L20)**  
HORSEPOWER: 285 hp @ 5400 rpm  
TORQUE: 295 lb-ft @ 4600 rpm

**VORTEC 6.0L V-8 VVT (L96) FlexFuel Capable**  
HORSEPOWER: 342 hp @ 5400 rpm  
TORQUE: 373 lb-ft @ 4400 rpm

**VORTEC 6.0L V-8 VVT CNG (LC8)**  
HORSEPOWER: 282 hp @ 4800 rpm  
TORQUE: 320 lb-ft @ 4400 rpm

**CNG TECHNOLOGY** GMC supports the goal of reducing CO<sub>2</sub> emissions by offering CNG technology that significantly reduces vehicle emissions. Check [gmfleet.com](http://gmfleet.com) for availability.

**E85 FLEXFUEL CAPABILITY<sup>2</sup>** To give you more choices at the pump, the Vortec 6.0L (L96) V-8 engine is capable of running on E85 ethanol when properly equipped.



**VARIABLE VALVE TIMING (VVT)** All Vortec V-8 engines use this technology to monitor and adjust valve opening and closing points, giving you near-peak levels of torque across the range of engine speeds.

### DURAMAX DIESEL

**DURAMAX POWER** The most powerful available diesel in its class uses high-pressure direct-injection technology to run at peak efficiency and to start easily in cold temperatures—as quickly as 3.0 seconds at -40° F. The available Duramax 6.6L V-8 Turbo Diesel is coupled to an automatic 6-speed transmission. Together, they form a heavy-duty powertrain producing a remarkable 525 lb-ft of torque at just 1600 rpm.

**DURAMAX 6.6L V-8 TURBO DIESEL (LGH)**  
HORSEPOWER: 260 hp @ 3100 rpm  
TORQUE: 525 lb-ft @ 1600 rpm  
TRANSMISSION: 6-Speed Automatic

**DURAMAX B20 BIODIESEL CAPABILITY** The Duramax Diesel is engineered to operate on B20 biodiesel, a mixture of 20 percent biodiesel produced from domestic, renewable resources and 80 percent petroleum diesel.

<sup>1</sup>With Duramax 6.6L V-8 Turbo Diesel. <sup>2</sup>E85 is 85% ethanol and 15% gasoline. Go to [afdc.energy.gov/afdc/fuels](http://afdc.energy.gov/afdc/fuels) to find an E85 station near you. <sup>3</sup>Before you buy a vehicle or use it for trailering, carefully review the trailering section of the Owner's Manual. The weight of passengers, cargo and options or accessories may reduce the amount you can tow.



## TRANSMISSIONS

To stand up to punishing stop-and-go driving as well as the demands of high-torque situations such as transporting heavy loads and trailering, Savana features a Professional Grade 6-speed automatic transmission.

**TOW/HAUL MODE** This driver-selectable feature of the 6-speed automatic transmission reduces excess shifting when towing or hauling a heavy load.

**TOW/HAUL MODE GRADE BRAKING** This innovation is automatically activated in Tow/Haul mode, but disengaged when Range Selection mode is activated. It detects when you're on a downhill grade then, if necessary, the transmission downshifts to help hold your desired speed.

**NORMAL MODE GRADE BRAKING** This standard feature assists in maintaining desired vehicle speeds when driving on downhill grades by using the engine and transmission to slow the vehicle. It is automatically activated when the vehicle is started, but disengaged when Range Selection mode is activated.

## CHASSIS & SUSPENSION

Our push for capability starts with a fully boxed steel frame. And since hills, ramps and rain-slicked roads make heavy loads feel even heavier, we didn't stop there. We engineered Savana with technologies including the StabiliTrak stability control system and an available Eaton<sup>®</sup> automatic locking rear differential. No other competitor offers a fully automatic locking rear differential.



**135" OR 155" WHEELBASE OPTIONS** To help you build a vehicle to suit your needs, Savana is available in two wheelbase configurations that can meet a variety of personal and professional applications.

**TRACTION CONTROL SYSTEM** To make the most of available traction on many road surfaces, the system measures and compares the speed of your wheels. When it senses one or more wheels starting to spin, it applies individual brakes and manages engine power to slow the wheel down to maintain grip.

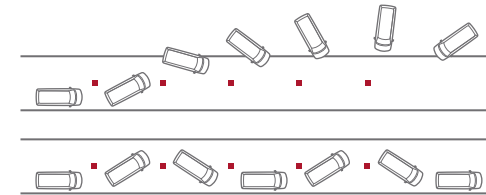
**FULLY INDEPENDENT FRONT SUSPENSION** An independent coil-over-shock front suspension gives you a smooth ride with responsive handling.

**EATON AUTOMATIC LOCKING REAR DIFFERENTIAL** When the available Eaton locker senses a difference in wheel speed between the left and right rear wheels of approximately 100 rpm, it locks both to turn in unison for added traction.

**FULLY BOXED HIGH-STRENGTH STEEL FRAME** Welding two overlapping C-channel sections forms a rigid box that resists bending and twisting. This frame helps Savana achieve impressive Gross Vehicle Weight Ratings (GVWR) and Gross Combination Weight Ratings (GCWR) as well as support a maximum conventional trailer weight rating of up to 10,000 lbs<sup>3</sup> in Cargo and Passenger Van models.

**PARALLEL LEAF SPRINGS** The rear suspension uses parallel leaf springs that progressively increase their capacity to match payload, so the ride is comfortable when empty and stable when loaded to the limit.

**STABILITRAK STABILITY CONTROL SYSTEM** Using a network of sensors to monitor how Savana is responding to steering and braking commands, StabiliTrak determines whether the vehicle is not responding properly. It can pulse the brakes or reduce engine power to help maintain the path being steered.



**POWER STEERING** The power recirculating ball-type steering gives a constant level of assist, even when operating at the maximum weight rating.

**POWER FOUR-WHEEL DISC BRAKES** Every model provides the confidence of power four-wheel disc brakes with ABS.

**TRAILERING CAPACITY<sup>3</sup>** The maximum ratings range up to 10,000 lbs in the 2500 and 3500 Series Cargo Vans and the 3500 Passenger Van.



## WHEN IT COMES TO SAFETY, MORE IS A GOOD THING.

GMC engineers focused on designing Savana to surround you and your passengers with Professional Grade protection. It starts with a reinforced steel safety cage and continues with new seat-mounted side-impact air bags in addition to frontal and head curtain side-impact air bags.<sup>1</sup>

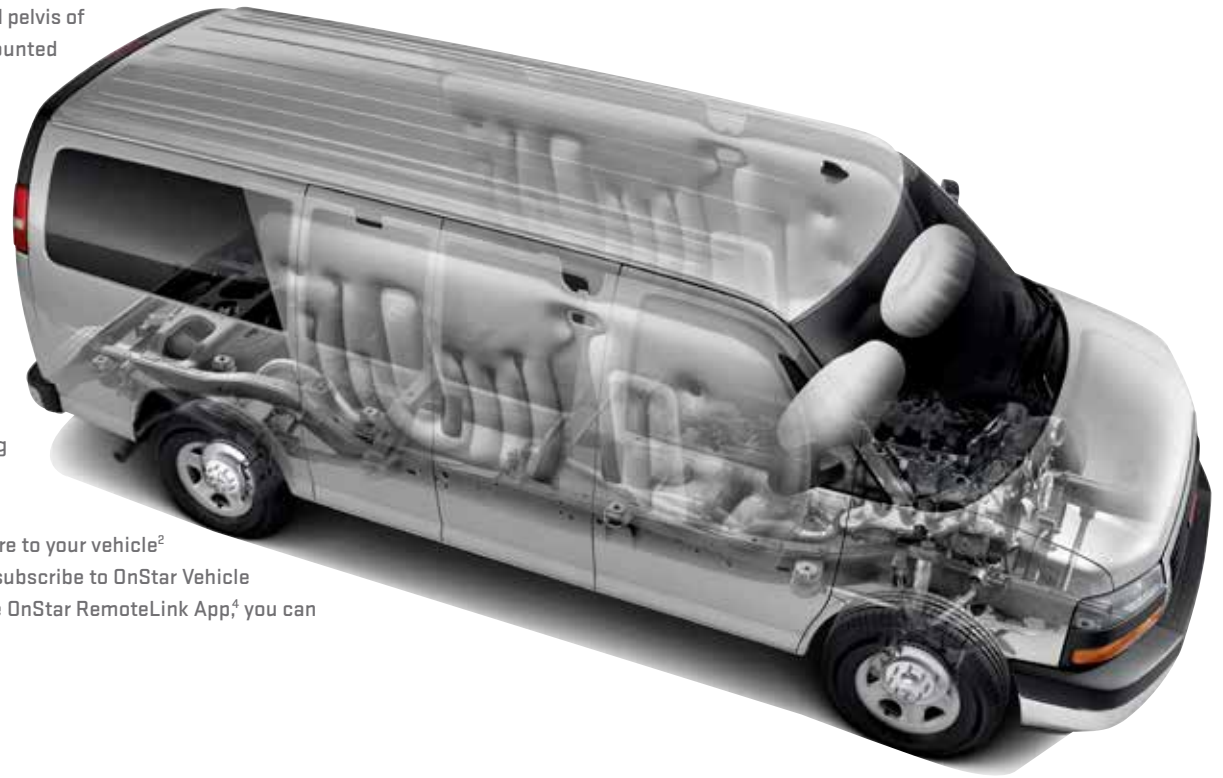
**NEW SEAT-MOUNTED SIDE-IMPACT AIR BAGS<sup>1</sup>** To help protect the thorax and pelvis of the driver and front passenger in a side-impact collision, side-impact air bags are mounted on the driver and front-passenger seats.

**HEAD CURTAIN SIDE-IMPACT AIR BAGS<sup>1</sup>** These air bags unfurl from the roof rail like a protective curtain for the first-, second- and third-row outboard passengers, and can be activated by either rollover sensors or side-impact sensors.

**FRONTAL AIR BAGS<sup>1</sup>** To help reduce the risk of injury, all models feature driver and front-passenger frontal air bags.

**REINFORCED STEEL SAFETY CAGE DESIGN** The high-strength steel frame is connected to the main body structure with reinforced body sills, roof pillars and a reinforced floor. This design creates a safety cage that surrounds passengers, helping maintain passenger compartment integrity in the event of a collision.

**TIRE PRESSURE MONITORING SYSTEM** The system communicates tire pressure to your vehicle<sup>2</sup> to alert you to the tires' inflation level through the Driver Information Center. If you subscribe to OnStar Vehicle Diagnostics, this information is part of its monthly e-mail update,<sup>3</sup> or if you have the OnStar RemoteLink App,<sup>4</sup> you can check the status instantly.



<sup>1</sup>Air bag inflation can cause severe injury or death to anyone too close to the air bag when it deploys. Be sure every occupant is properly restrained. Always use safety belts and the correct child restraint for your child's age and size, even with air bags. Even in vehicles equipped with the Passenger Sensing System, children are safer when properly secured in a rear seat in the appropriate infant, child or booster seat. Never place a rear-facing infant restraint in the front seat of any vehicle equipped with an active frontal air bag. See your Owner's Manual and child safety seat instructions for more safety information. <sup>2</sup>Does not monitor spare tire. <sup>3</sup>Visit [onstar.com](http://onstar.com) for coverage map, details and system limitations. <sup>4</sup>Requires active OnStar subscription and compatible Android,<sup>™</sup> iPhone,<sup>®</sup> BlackBerry<sup>®</sup> or Windows<sup>®</sup> platform. Services vary by phone, vehicle and conditions.

## PROFESSIONAL GRADE PROTECTION.

Pro Grade Protection is standard on every 2016 Savana model. From maintenance to protecting the entire vehicle, you can drive with the knowledge that your operating costs have been reduced.

2 INCLUDED MAINTENANCE VISITS WITHIN 2 YEARS/24,000 MILES,<sup>1</sup> INCLUDING DIESEL EXHAUST FLUID 3-YEAR/36,000-MILE BUMPER-TO-BUMPER LIMITED WARRANTY<sup>2</sup>  
5-YEAR/60,000-MILE POWERTRAIN LIMITED WARRANTY<sup>2</sup>

## WE'RE AS CLOSE AS THE BLUE BUTTON.



Standard for 6 months on Savana Passenger Vans and available on Savana Cargo Vans, the OnStar Guidance Plan<sup>3</sup> (trial excludes Hands-Free Calling minutes) lets you connect to a specially trained OnStar Advisor just by pressing the blue OnStar button in your Savana.

**ONSTAR WITH 4G LTE AND BUILT-IN WI-FI HOTSPOT<sup>4</sup>** Now your Savana has an available built-in Wi-Fi hotspot to connect up to seven tablets, laptops or mobile devices at 4G LTE speeds, so the content you crave is always headed where you are. Requires a data plan after the 3-month trial period (3 months of data or 3GB, whichever comes first).

**ONSTAR BASIC PLAN<sup>5</sup>** With the Basic Plan, you've got a powerful connection to your vehicle and the world around you standard for 5 years at no additional cost to you. You'll have access to select services, which include limited features of the OnStar RemoteLink mobile app that lets you remote-start your car (if equipped), pinpoint your vehicle on a map on your smartphone and manage your vehicle's Wi-Fi hotspot<sup>4</sup> (if equipped). Plus, send a destination to your in-vehicle navigation screen and lock or unlock your doors—all from your mobile device. Your vehicle can also run diagnostic checks on itself and remind you of servicing needs by e-mail.

**AUTOMATIC CRASH RESPONSE** In a crash, built-in sensors can automatically alert an OnStar Advisor who is immediately connected into your vehicle to see if you need help—even if you can't ask for it.

**EMERGENCY SERVICES** One push of the red emergency button gives you a priority connection to a specially trained OnStar Advisor who can direct emergency services to your exact location and offer critical assistance until help arrives. With OnStar, you're never alone.

**CRISIS ASSIST** During severe weather or other crisis situations, OnStar can provide a quick, central point of contact when you need emergency assistance, navigation help or information.

**ROADSIDE ASSISTANCE<sup>6</sup>** If you're stranded, have a flat tire or need a tow truck, just ask an OnStar Advisor to get help to your exact location to get you back on the road quickly.

**STOLEN VEHICLE ASSISTANCE<sup>7</sup>** If your vehicle is stolen, OnStar can use GPS to pinpoint and work with authorities to quickly help recover it. On many models, an Advisor can send a signal to slow the vehicle or prevent it from restarting.

**TURN-BY-TURN NAVIGATION** Getting directions is as easy as pushing a button and telling an Advisor where you want to go. Directions are quickly downloaded to your vehicle, and a voice calls out every turn. An Advisor can also help you with a database of more than 14 million points of interest. To plan routes in advance, you can send directions to your vehicle through an Advisor or the RemoteLink mobile app.

**ONSTAR WITH 4G LTE CONNECTION<sup>3</sup>** With powerful 4G LTE connectivity built right into your vehicle, you have your very own mobile command center that provides faster service delivery and lets you stay connected on the go.

**ONSTAR REMOTELINK MOBILE APP<sup>3</sup>** You can remotely start your vehicle, locate your vehicle on a map, lock or unlock your doors, honk your horn and flash your lights. You can also send directions to your vehicle through your smartphone.

**REMOTE SERVICES** A simple call to an OnStar Advisor can send a signal to unlock your doors or honk the horn and flash the lights. It's technology hard at work to get you back on the road.

**HANDS-FREE CALLING<sup>3</sup>** Your vehicle has built-in Hands-Free Calling to help keep you safely connected when your cell phone isn't available. Choose from minute bundles or a minutes-per-month plan.

**AT YOUR SERVICE** Life just got easier and more affordable with the personalized connection of AtYourService. Our trusted Advisors can deliver offers for everyday savings from restaurants and retailers on your route, help you locate hotels and even book your room.

**ONSTAR VEHICLE DIAGNOSTICS** As part of the Basic Plan, every month your vehicle can run a thorough check of your engine, transmission, antilock brakes and more, and e-mail you the results.

**DEALER MAINTENANCE NOTIFICATION** Is it time for a tire rotation? An oil change? Or a new air filter? You'll always know because your Savana can e-mail your Vehicle Diagnostics report to the dealer when it's time, and the dealer will contact you to set up a service appointment.

<sup>1</sup>Maintenance visits must occur within 2 years or 24,000 miles of vehicle delivery, whichever comes first. Does not include air filters. See participating dealer for other restrictions and complete details. <sup>2</sup>Whichever comes first. See dealer for limited warranty details. <sup>3</sup>Visit onstar.com for coverage map, details and system limitations. Services vary by model and conditions. OnStar acts as a link to existing emergency service providers. Not all vehicles may transmit all crash data. Mobile app available on select iOS, Android, BlackBerry and Windows devices. Services vary by device, vehicle and conditions. The OnStar Vehicle Locate Service can locate OnStar-equipped vehicles, not people. Requires an active OnStar subscription. OnStar Hands-Free Calling requires an existing OnStar service contract and available minutes. Not available in certain markets. Visit onstar.com for coverage map, details and system limitations. Available 4G LTE Wi-Fi requires compatible mobile device, active OnStar subscription and data plan. Plus tax. Credit card payment required for monthly subscriptions. <sup>4</sup>Devices must be WPA2-compliant with active OnStar service and data plan. Wi-Fi devices manufactured prior to 2006 may not be compatible. Please consult your device manufacturer for information regarding the WPA2 security protocol and Wi-Fi device compatibility. Vehicle must be started or in accessory mode to access Wi-Fi. Visit onstar.com for details and system limitations.

<sup>5</sup>The OnStar Basic Plan is available for 5 years from the date of delivery of eligible 2016 model year and newer vehicles and is transferable, including Vehicle Diagnostics, Dealer Maintenance Notification and access to limited OnStar RemoteLink mobile app features. The OnStar Basic Plan does not include emergency, security or navigation services. These and other services are available under a paid plan. Visit onstar.com for vehicle availability, coverage map, details and system limitations. Requires factory-installed remote start. Available 4G LTE Wi-Fi requires compatible mobile device, active OnStar subscription and data plan. Requires factory-equipped vehicle navigation screen. Ability to send a destination to a vehicle's navigation screen through a smartphone is only available on 2016 model year and newer vehicles. Currently available to OnStar Guidance Plan subscribers in the U.S. only.

<sup>6</sup>Roadside service provided by Allstate Roadside Services. <sup>7</sup>Services vary by model and conditions. Visit onstar.com for vehicle availability, details and system limitations.

**INTERIOR COLORS AND SEATING SURFACES**



Neutral<sup>1</sup>



Medium Pewter



Neutral<sup>1</sup>



Medium Pewter

**MODELS**

	Interior Vinyl		Interior Cloth	
WT	●	●	○	○
LS	●	●	○	○
LT	—	—	—	●

KEY ● STANDARD ○ AVAILABLE — NOT AVAILABLE <sup>1</sup>Not available on Passenger Van. See your dealer for more details.

**WHEELS**

2500 & 3500 SERIES WHEELS



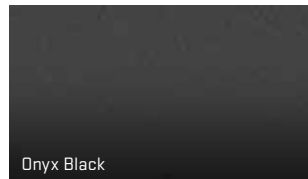
QB5 16" 8-LUG GRAY-PAINTED STEEL  
STANDARD ON 2500/3500 SERIES  
WT, LS TRIM



P03 16" 8-LUG GRAY-PAINTED STEEL  
WITH CHROME CENTER CAP  
STANDARD ON 2500/3500 SERIES  
LT TRIM  
AVAILABLE ON 2500/3500 SERIES  
WT, LS TRIM

See your dealer for more wheel availability details.

**EXTERIOR COLORS**



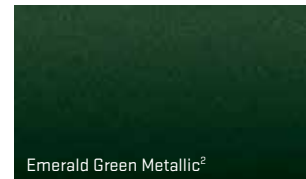
Onyx Black



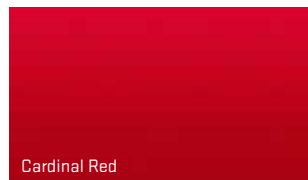
Cyber Gray Metallic<sup>2</sup>



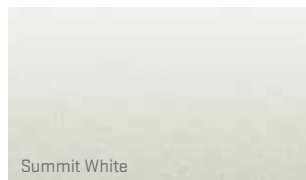
Quicksilver Metallic<sup>2</sup>



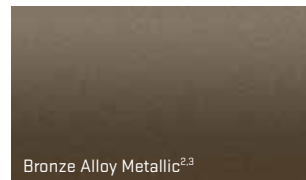
Emerald Green Metallic<sup>2</sup>



Cardinal Red



Summit White



Bronze Alloy Metallic<sup>2,3</sup>



Wheatland Yellow

<sup>2</sup>Extra-cost color. <sup>3</sup>Cargo Van models only.

TRIM LEVELS

WT LS LT

**MECHANICAL**

<b>ALTERNATOR</b> 145 amps. Standard on diesel models. Also included with rear air conditioning on gas-engine models. 220 amps. Not available with Duramax 6.6L V-8 Turbo Diesel engine.	▲	○	●
<b>AUXILIARY HEAT GENERATOR</b> Fuel operated. Diesel models only.	▲	○	○
<b>BATTERY</b> Dual heavy-duty maintenance-free with 770 cold-cranking amps, rundown protection and retained accessory power. Diesel models only.	▲	●	●
Isolated second battery. Allows second battery to be used when the vehicle is not running without affecting ability to start the vehicle. Not available with Vortec 6.0L V-8 CNG or Duramax 6.6L V-8 Turbo Diesel engines.	▲	○	○
<b>COLD CLIMATE PACKAGE</b> Engine block heater	▲	○	○
<b>DIFFERENTIAL</b> Heavy-duty automatic locking rear	▲	○	○
<b>ENGINES</b> Vortec 4.8L V-8	▲	●	●
Vortec 6.0L V-8 FlexFuel	▲	○	○
Vortec 6.0L V-8 Compressed Natural Gas (CNG). See dealer for more details on model and system availability.	▲	○	○
Duramax 6.6L V-8 Turbo Diesel. See dealer for more details on model availability.	▲	○	○
<b>STABILITRAK</b> Vehicle stability enhancement system and traction control	▲	●	●
<b>TOW/HAUL MODE SELECTOR</b>	▲	●	●
<b>TRAILERING EQUIPMENT</b> Heavy-duty trailering hitch platform and 7-pin sealed connector	▲	○	○
<b>TRANSMISSION</b> 6-speed automatic, heavy-duty, electronic Tow/Haul mode	▲	●	●
<b>TRANSMISSION OIL COOLER</b> External; 2500 and 3500 Series models	▲	●	●

**SEATING**

<b>FRONT RECLINING BUCKET SEATS</b> With vinyl trim	▲	●	–
With custom cloth trim	▲	○	●
<b>POWER SEAT ADJUSTER</b> Driver and front passenger, 6-way (driver only on WT models)	▲	○	○
<b>SEATING CONFIGURATION</b> 2-passenger, WT models only	▲	–	–
5-passenger, 2500 and 3500 Series WT models only. See your dealer for more details.	▲	–	–
8-passenger, 2500 and 3500 Series models	–	○	○
12-passenger, 2500 and 3500 Series models	–	●	●
15-passenger, 3500 Series extended-wheelbase models only	–	○	○

**INSTRUMENTATION AND CONTROLS**

<b>8-POINT DIGITAL COMPASS</b> Located in the Driver Information Center. Requires rear air conditioning.	▲	○	●
<b>OUTSIDE TEMPERATURE DISPLAY</b> Located in the Driver Information Center. On LS trim, requires Chrome Appearance Package.	▲	○	●
<b>REAR VISION CAMERA SYSTEM</b> With inside rearview mirror display; if Color Touch Navigation <sup>4</sup> is ordered, camera display is on NAV screen	▲	○	○
<b>STEERING WHEEL</b> Leather-wrapped; includes steering-wheel-mounted audio controls. Requires Convenience Package (ZQ3) and uplevel CD with MP3 audio system or Color Touch Navigation System. <sup>4</sup>	▲	○	○
<b>TILT-ADJUSTABLE STEERING WHEEL</b> Includes cruise control. Requires Convenience Package (ZQ3) on WT and LS models. Standard on 3500 Series Passenger Van models.	▲	○	●
<b>ULTRASONIC REAR PARK ASSIST</b> With audible warning	▲	○	○

**INTERIOR/CONVENIENCE**

<b>AIR CONDITIONING</b> Front	▲	●	●
Rear. Requires auxiliary lighting on LS models. Standard on 3500 Series Passenger Van extended-wheelbase models.	▲	○	●
<b>CARGO TIE-DOWNS</b> Includes 6 D-ring attachments on cargo-area floor	▲	–	–
<b>CONVENIENCE PACKAGE (ZQ3)</b> Tilt-wheel and cruise control. Standard on 3500 Series Passenger Van models.	▲	○	●
<b>DELUXE CONSOLE</b> With swing-out storage	▲	○	●
<b>LIGHTING</b> Includes 3 roof-mounted LED cargo lamps. WT trim only.	▲	–	–
<b>PADDED VISORS</b> Driver and passenger side	▲	●	●
With vanity mirrors (illuminated on passenger side). Standard on 3500 Series extended-wheelbase models.	–	○	●
<b>POWER OUTLET</b> 110-volt	▲	●	●
<b>POWER WINDOWS</b>	▲	●	●

KEY WT (CARGO) ▲ STANDARD ○ AVAILABLE – NOT AVAILABLE  
LS & LT (PASSENGER) ● STANDARD ○ AVAILABLE – NOT AVAILABLE

TRIM LEVELS

WT LS LT

**INTERIOR/CONVENIENCE continued**

<b>REAR AUXILIARY HEATER</b> WT and LS trim; included with rear air conditioning. Standard on 3500 Series Passenger Van extended-wheelbase models.	▲	○	●
<b>REAR-WINDOW DEFROGGER</b>	▲	○	○
<b>REMOTE KEYLESS ENTRY</b> Includes 2 transmitters	▲	○	●
<b>REMOTE START</b> Requires remote keyless entry on WT and LS models	▲	○	○

**ENTERTAINMENT/COMMUNICATION/NAVIGATION**

<b>AM/FM STEREO</b> With MP3 player, seek-and-scan, digital clock and 2 front-door speakers	▲	●	●
With MP3 player, USB <sup>5</sup> port, seek-and-scan, auxiliary input, digital clock and 2 front-door speakers	▲	○	○
With CD/SiriusXM-capable <sup>6</sup> /MP3 player and USB port. <sup>5</sup> Includes 6 speakers on Passenger Van models.	▲	○	○
With Color Touch Navigation <sup>4</sup> Radio with IntelliLink, <sup>7</sup> 6.5" diagonal color touch-screen display, AM/FM stereo with CD player. Includes Bluetooth <sup>8</sup> streaming audio for music and select phones; hands-free smartphone integration with Pandora <sup>9</sup> and Stitcher <sup>™</sup> SmartRadio, voice-activated technology for radio and phone. Includes 6 speakers on Passenger Van models.	▲	○	○
<b>BLUETOOTH<sup>8</sup> FOR PHONE</b> Personal cell phone connectivity	▲	○	○
<b>NAVTRAFIC<sup>9</sup></b> Includes 3 trial months of service and only available with Color Touch Navigation <sup>4</sup> Radio with IntelliLink <sup>7</sup>	▲	○	○
<b>ONSTAR 4G LTE</b> 5-year Basic Plan and 6-month Guidance Plan <sup>9</sup>	▲	●	●
OnStar 4G LTE Wi-Fi <sup>10</sup> hotspot capability (with 3-month/3GB trial, whichever comes first)	▲	○	●
<b>SIRIUSXM SATELLITE RADIO<sup>9</sup></b> 3 trial months included	▲	○	○

**EXTERIOR STYLING AND FUNCTIONALITY**

<b>CHROME APPEARANCE PACKAGE</b> Chrome front and rear bumpers and grille; includes halogen composite headlamps	▲	○	●
<b>DAYTIME RUNNING LAMPS</b>	▲	●	●
<b>FRONT AND REAR BUMPERS</b> Black (includes rear step pad)	▲	○	–
Chrome (includes rear step pad)	▲	○	●
<b>OUTSIDE REARVIEW MIRRORS</b> Manual foldaway	▲	●	●
Power-operated, heated, black. Requires Convenience Package (ZQ3). Included with Savana Pro Plus Package on WT trim.	▲	○	○
Power-operated, heated, black, manual-folding with single pane glass	▲	○	○
<b>SAVANA PRO</b> Includes 3 remote-release side-access panels. See your dealer for more details.	▲	–	–
<b>SAVANA PRO PLUS</b> Requires Savana Pro side-access panels. Includes access panel lights, chrome front and rear bumpers, chrome grille with dual composite halogen headlamps, chrome center cap wheel trim, auxiliary lighting and outside heated, power-adjustable black mirrors.	▲	–	–
<b>SLIDING PASSENGER-SIDE DOOR</b> On LS trim, requires rear air conditioning	▲	○	○
<b>SOLAR-RAY DEEP-TINTED WINDOWS</b>	▲	●	●
<b>SWING-OUT PASSENGER-SIDE DOORS</b>	▲	●	●

**SAFETY AND SECURITY**

<b>AIR BAGS<sup>10</sup></b> Frontal, for driver and front passenger	▲	●	●
Seat-mounted side-impact, driver and front passenger plus head curtain side-impact for first-, second- and third-row outboard occupants	▲	●	●
<b>ENHANCED-TECHNOLOGY GLASS</b> Rearmost side windows; 12- and 15-passenger models only	–	●	●
<b>LATCH CHILD SEAT ANCHOR SYSTEM</b>	–	●	●
<b>PASS-KEY III THEFT-DETERRENT SYSTEM</b>	▲	●	●
<b>POWER DOOR LOCKS</b> With lockout protection	▲	●	●
<b>SIDE STEEL DOOR BEAMS</b>	▲	●	●
<b>TIRE PRESSURE MONITORING SYSTEM</b> Does not monitor spare tire	▲	●	●

<sup>4</sup>Map coverage available in the United States, U.S. Virgin Islands, Puerto Rico and Canada. <sup>5</sup>Not compatible with all devices. <sup>6</sup>If you subscribe after your trial period, subscriptions are continuous until you call SiriusXM to cancel. See SiriusXM Customer Agreement for complete terms at siriusxm.com. Other fees and taxes will apply. All fees and programming subject to change. For more information about NavTraffic, visit siriusxm.com/navtraffic. XM satellite service is available only to those in the 48 contiguous USA and D.C. <sup>7</sup>Full functionality requires compatible Bluetooth and smartphone. Some devices require USB connectivity. Data plan rates apply. <sup>8</sup>Go to my.gmc.com/learn to find out which phones are compatible with the vehicle. <sup>9</sup>Devices must be WPA2-compliant with active OnStar service and data plan. Wi-Fi devices manufactured prior to 2006 may not be compatible. Please consult your device manufacturer for information regarding the WPA2 security protocol and Wi-Fi device compatibility. Vehicle must be started or in accessory mode to access Wi-Fi. Visit onstar.com for details and system limitations. <sup>10</sup>A NOTE ON CHILD SAFETY: Always use safety belts and the correct child restraint for your child's age and size, even with air bags. Even in vehicles equipped with the Passenger Sensing System, children are safer when properly secured in a rear seat in the appropriate infant, child or booster seat. Never place a rear-facing infant restraint in the front seat of any vehicle equipped with an active frontal air bag. See your vehicle Owner's Manual and child safety seat instructions for more safety information.





GMC Business Choice is an incentive program designed for business owners like you who rely on their vehicles for their day-to-day operations. It's available when you purchase or lease an eligible, new GMC vehicle, and it offers several options including the GM Accessory or Upfit Cash Allowance. For complete program requirements, including information regarding offers, vehicles, equipment, options, warranties and ordering information, consult with your GMC dealer, or visit [gmbusinesschoice.com](http://gmbusinesschoice.com).



Business Elite dealers provide you with a team of expert sales account specialists to help you select the right vehicles for the job. They stock a diverse lineup of vehicles that are ready for sale at a moment's notice. Plus, every Business Elite service department has the facilities, tools, equipment and certified technicians to help maintain your vehicle fleet. Learn more about both of these programs at [gmfleet.com](http://gmfleet.com).



## PASSENGER/CARGO VAN SPECIFICATIONS

## ENGINE SPECIFICATIONS

	AXLE RATIO	VORTEC 4.8L V-8	VORTEC 6.0L V-8	6.0L V-8 GASEOUS	DURAMAX 6.6L V-8 TURBO DIESEL
SAE net horsepower @ rpm		285 @ 5400	342 @ 5400	282 @ 4800	260 @ 3100
SAE net torque @ rpm (lb-ft)		295 @ 4600	373 @ 4400	320 @ 4400	525 @ 1600

## ENGINE/MODEL AVAILABILITY

2500 Series [RWD]		●	○	○	○ (Cargo only)
3500 Series [RWD]		●	○	○	○

MAX. TRAILER WEIGHT IN LBS<sup>1</sup>  
(PASSENGER/CARGO)

2500 Series [regular wheelbase]	3.42 [3.54 Diesel]	8100/8900	9800/10,000	9500/9900	-/10,000
2500 Series [extended wheelbase]	3.42 [3.54 Diesel]	-/8600	-/10,000	-/9700	-/10,000
3500 Series [regular wheelbase]	3.42 [3.54 Diesel]	8100/8800	9700/10,000	-/9800	10,000/10,000
3500 Series [extended wheelbase]	3.42 [3.54 Diesel]	7800/8600	9300/10,000	9000/9600	9,700/10,000

## STANDARD TECHNICAL DATA

	2500 SERIES	3500 SERIES
Gross Vehicle Weight Rating [lbs] <sup>2</sup>	8600	9600/9900
Front Suspension [RWD]		Independent coil springs—all series
Front Suspension [AWD]		Independent torsion bar—all series
Front Axle Capacity [lbs]	4100	4300/4600
Rear Suspension		Multileaf springs—all series
Rear Axle Capacity [lbs]	5360	6084
Brakes		4-wheel disc with antilock system—all series
Transmission: Electronic automatic with overdrive, Tow/Haul mode	6-speed heavy-duty	6-speed heavy-duty
Cargo Capacity with Seats Removed [regular wheelbase] <sup>3</sup>		216.2 cu. ft. Passenger (270.4 cu. ft. Cargo)
Cargo Capacity with Seats Removed [extended wheelbase] <sup>3</sup>		252.8 cu. ft. Passenger (313.9 cu. ft. Cargo)
Fuel Tank Capacity		31 gallons approx.—all series

KEY ● STANDARD ○ AVAILABLE - NOT AVAILABLE

<sup>1</sup>Before you buy a vehicle or use it for trailering, carefully review the trailering section of the Owner's Manual. The weight of passengers, cargo and options or accessories may reduce the amount you can tow. <sup>2</sup>When properly equipped; includes weight of vehicle, passengers, cargo and equipment. <sup>3</sup>Cargo and load capacity limited by weight and distribution.

## IMPORTANT WORDS

### PRO GRADE PROTECTION

For 2016, Savana comes with the Pro Grade Protection Plan, which includes two maintenance visits,<sup>1</sup> 3-year/36,000-mile bumper-to-bumper limited warranty<sup>2</sup> and 5-year/60,000-mile powertrain limited warranty,<sup>2</sup> Roadside Assistance and Courtesy Transportation.

Starting with the owner orientation—and full tank of gas—you receive when you take possession of your Savana to the **24-Hour Roadside Assistance, Courtesy Transportation and Travel Benefits**, you receive a portfolio of owner privileges that lasts throughout your warranty. For expert product information, Roadside Assistance or other services, call 1-800-GMC-8782.

**TRAVEL BENEFITS AND ROADSIDE ASSISTANCE** Available around the clock: trip routing service, a program for reimbursement for trip interruption due to necessary warranty repairs, towing, flat tire change, jump-starts and more for 5 years or 60,000 miles (whichever comes first).

**COURTESY TRANSPORTATION** Available at participating dealers: shuttle service, reimbursement of certain public transportation or fuel expenses for overnight warranty repairs and courtesy rental for overnight work repairs. See your dealer for details.

**GMC OWNER CENTER** A complimentary, one-stop resource to enhance your GMC ownership experience. It's easy to sign up. Just go to [gm.com/gmownercenter/gmc](http://gm.com/gmownercenter/gmc).

### ONSTAR



OnStar services require vehicle electrical system (including battery), wireless service and GPS satellite signals to be available and operating for features to function properly. OnStar service required. OnStar acts as a link to existing emergency service providers. Not all vehicles may transmit all crash data. Visit [onstar.com](http://onstar.com) for coverage maps, details and system limitations. Services vary by model and conditions.

### SIRIUSXM SATELLITE RADIO



SiriusXM Satellite Radio<sup>3</sup> is available on all Savana models. It includes 3 trial months of service. SiriusXM Satellite Radio makes your drive come alive with commercial-free music channels from virtually every genre, artist-dedicated channels, live performances and more. Tune in to live play-by-play from the biggest sports, exclusive entertainment from top personalities, compelling talk, hilarious comedy, world-class news, local traffic and weather and family-friendly programming. Welcome to the world of satellite radio. Visit [siriusxm.com](http://siriusxm.com) for details.

### GMC CERTIFIED SERVICE



**Certified Service** To help your Savana live up to its performance promise, GMC Certified Service—found exclusively at your GMC dealer—is there. With all the engineering excellence in Savana, GM-trained technicians have the expertise to care for all of it.

### ADDITIONAL NOTES

**A NOTE ON CHILD SAFETY** Always use safety belts and the correct child restraint for your child's age and size, even with air bags. Even in vehicles equipped with the Passenger Sensing System, children are safer when properly secured in a rear seat in the appropriate infant, child or booster seat. Never place a rear-facing infant restraint in the front seat of any vehicle equipped with an active frontal air bag. See your vehicle Owner's Manual and child safety seat instructions for more safety information.

**TRAILERING AND OFF-ROAD INFORMATION** Please carefully review the Owner's Manual for important safety information about trailering or off-road driving in your vehicle.

**FLEET ORDERS** Some standard content may be deleted with fleet orders. See dealer for details.

**ENGINES** GMC products are equipped with engines produced by GM Powertrain or other suppliers to GM worldwide. The engines in GMC products may also be used in other GM makes and models.

**GMC.COM** See more of Savana on our website: [gmc.com/savana](http://gmc.com/savana). More photos and information; hot links to related subjects; convenient dealer locator; pricing guide, spec out your own vehicle. Or call 1-800-GMC-8782.

**BUYPOWER CARD™** Now it's even easier to get into the GMC of your dreams. Every purchase gives you Earnings redeemable toward part or even all of a new GMC, Chevrolet, Buick or Cadillac. Every year, enjoy 5 percent Earnings on your first \$5,000 in purchases and 2 percent unlimited Earnings after that. No expiration on Earnings and no limit on how much you can earn or redeem. Learn more at [buypowercard.com/catalog](http://buypowercard.com/catalog). YOUR CARD IS THE KEY.™



**IMPORTANT WORDS ABOUT THIS CATALOG** We have tried to make this catalog comprehensive and factual. We reserve the right, however, to make changes at any time, without notice, in prices, colors, materials, equipment, specifications, models and availability. Specifications, dimensions, measurements, ratings and other numbers in this catalog and other printed materials provided at the dealership or affixed to vehicles are approximates based upon design and engineering drawings and prototypes and laboratory tests. Your vehicle may differ due to variations in manufacture and equipment. Since some information may have been updated since the time of printing, please check with your GMC dealer for complete details. GMC reserves the right to lengthen or shorten the model year for any product for any reason, or to start and end model years at different times. All competitive claims are based on the latest information available at the time of printing and GM Large Van segment.

**AN IMPORTANT NOTE ABOUT ALTERATIONS AND WARRANTIES** Installations or alterations to the original equipment vehicle (or chassis) as distributed by General Motors are not covered by the General Motors New-Vehicle Limited Warranty. The special body company, assembler, equipment installer or upfitter is solely responsible for warranties on the body or equipment and any alterations (or any effect of the alterations) to any of the parts, components, systems or assemblies installed by GM. General Motors is not responsible for the safety or quality of design features, materials or workmanship of any alterations by such suppliers.

**NEW-VEHICLE LIMITED WARRANTY** All GMC light-duty vehicles come with a fully transferable, no-deductible 5-year/60,000-mile<sup>2</sup> Powertrain Limited Warranty. GM vehicles registered in the USA are also covered for 3 years or 36,000 miles.<sup>2</sup> Coverage includes tires and towing to your nearest GMC dealership. Repairs will be made to correct any vehicle defect and most warranty repairs will be made at no charge. In addition, rust-through corrosion will be covered for 6 years or 100,000 miles.<sup>2</sup> Savana also comes with two maintenance visits within the first 2 years/24,000 miles.<sup>1</sup> See dealer for details.

**ASSEMBLY** GMC vehicles and their components are assembled or produced by different operating units of General Motors, its subsidiaries or suppliers to GM worldwide. We sometimes find it necessary to produce GMC vehicles with different or differently sourced components than originally scheduled. Since some options may be unavailable when your vehicle is assembled, we suggest that you verify that your vehicle includes the equipment you ordered or, if there are changes, that they are acceptable to you.

**GMMOBILITY.COM (1-800-323-9935)** GM Mobility offers financial assistance for eligible adaptive equipment to make automotive travel easier for persons with disabilities or special transportation needs. To learn more about special GM Mobility offers, visit [gmmobility.com](http://gmmobility.com).

<sup>1</sup>Maintenance visits must occur within 2 years or 24,000 miles of vehicle delivery, whichever comes first. Does not include air filters. See participating dealer for other restrictions and complete details. <sup>2</sup>Whichever comes first. See dealer for limited warranty details. <sup>3</sup>If you subscribe after your trial period, *subscriptions are continuous until you call SiriusXM to cancel*. See SiriusXM Customer Agreement for complete terms at [siriusxm.com](http://siriusxm.com). Other fees and taxes will apply. All fees and programming subject to change. For more information about NavTraffic, visit [siriusxm.com/navtraffic](http://siriusxm.com/navtraffic). XM satellite service is available only to those in the 48 contiguous USA and D.C.

©2015 General Motors. All rights reserved. GM, the GM logo, GMC, the slogans, emblems, vehicle model names, vehicle body designs and other marks appearing in this catalog are the trademarks and/or service marks of General Motors, its subsidiaries, affiliates or licensors. Facebook is a registered trademark of Facebook, Inc. Twitter is a registered trademark of Twitter, Inc. YouTube is a registered trademark of Google, Inc. Sirius, XM and all related marks and logos are trademarks of SiriusXM Radio, Inc.



[FACEBOOK.COM/GMC](https://www.facebook.com/GMC)



[TWITTER.COM/THISISGMC](https://twitter.com/THISISGMC)



[YOUTUBE.COM/GMC](https://www.youtube.com/GMC)